

Basic Information

Product Name	Anti-CLTC Antibody (Clone#ABDH-3)	
Gene Name	CLTC	
Source	Rabbit	
Clonality	Monoclonal	
Isotype	IgG	
Species Reactivity	human, mouse, rat	
Tested Application	WB, IHC, ICC/IF	
Contents	500 ug/ml; Rabbit IgG in phosphate buffered saline, pH 7.4, 150mM NaCl, 0.02% sodium azide, 0.4-0.5 mg/ml BSA and 50% glycerol.	
Immunogen	A synthesized peptide derived from human Clathrin heavy chain	
Concentration	500 ug/ml	
Purification	Affinity-chromatography	
Observed MW	192 kDa	
Dilution Ratios	Western blot (WB):	1:500-2000
	Immunohistochemistry (IHC):	1:50-200
	Immunocytochemistry/Immunofluorescence (ICC/IF):	1:50-200

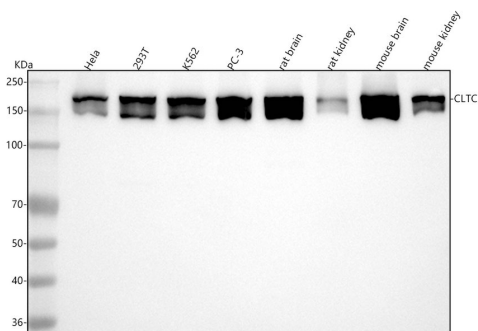
Storage

12 months from date of receipt, -20°C as supplied.

Background Information

Clathrin heavy chain 1 is a protein that in humans is encoded by the CLTC gene. Clathrin is a major protein component of the cytoplasmic face of intracellular organelles, called coated vesicles and coated pits. These specialized organelles are involved in the intracellular trafficking of receptors and endocytosis of a variety of macromolecules. The basic subunit of the clathrin coat is composed of three heavy chains and three light chains.

Selected Validation Data



Western blot analysis of anti-CLTC antibody (BM5130). The sample well of each lane was loaded with 30 ug of sample under reducing conditions.

Lane 1: human Hela whole cell lysates,

Lane 2: human 293T whole cell lysates,

Lane 3: human K562 whole cell lysates,

Lane 4: human PC-3 whole cell lysates.

Lane 5: rat brain tissue lysates,

Lane 6: rat kidney tissue lysates,

Lane 7: mouse brain tissue lysates,

Lane 8: mouse kidney tissue lysates.

After electrophoresis, proteins were transferred to a membrane.

Then the membrane was incubated with rabbit anti-CLTC antigen

affinity purified monoclonal antibody (BM5130) at a dilution of

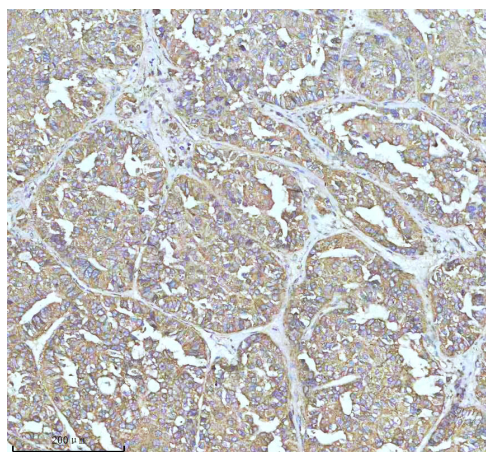
1:2000 and probed with a goat anti-rabbit IgG-HRP secondary

antibody (Catalog # BA1054). The signal is developed using ECL Plus

Western Blotting Substrate (Catalog # AR1197). A specific band was

detected for CLTC at approximately 192 kDa. The expected band

size for CLTC is at 192 kDa.



IHC analysis of CLTC using anti-CLTC antibody (BM5130) .

CLTC was detected in a paraffin-embedded section of human liver

cancer tissue. The tissue section was incubated with rabbit anti-CLTC

Antibody (BM5130) at a dilution of 1:200 and developed using HRP

Conjugated Rabbit IgG Super Vision Assay Kit (Catalog # SV0002)

with DAB (Catalog # AR1027) as the chromogen.

Product datasheet

Anti-CLTC Antibody (Clone#ABDH-3)

Catalog Number: **BM5130**

BOSTER[®]

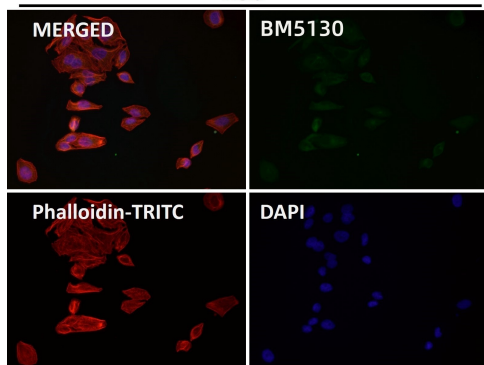
antibody and ELISA experts

BOSTER BIOLOGICAL TECHNOLOGY

Building C21, 3rd to 5th Floors, Optics Valley Biopharmaceutical Accelerator,
East Lake High-Tech Development Zone, Wuhan.

Web: www.boster.com **Phone:** 027-67845390/1/2 **Email:** boster@boster.com

Hela



Immunofluorescent analysis using the Antibody.