

## Basic Information

Product Name	Anti-BNIP3L Antibody (Clone#ABIB-2)
Gene Name	BNIP3L
Source	Rabbit
Clonality	Monoclonal
Isotype	IgG
Species Reactivity	human, mouse, rat
Tested Application	WB, IHC
Contents	500 ug/ml; Rabbit IgG in phosphate buffered saline, pH 7.4, 150mM NaCl, 0.02% sodium azide, 0.4-0.5 mg/ml BSA and 50% glycerol.
Immunogen	A synthesized peptide derived from human BNIP3L
Concentration	500 ug/ml
Purification	Affinity-chromatography
Observed MW	35 kDa
Dilution Ratios	Western blot (WB): 1:500-2000 Immunohistochemistry (IHC):1:50-200

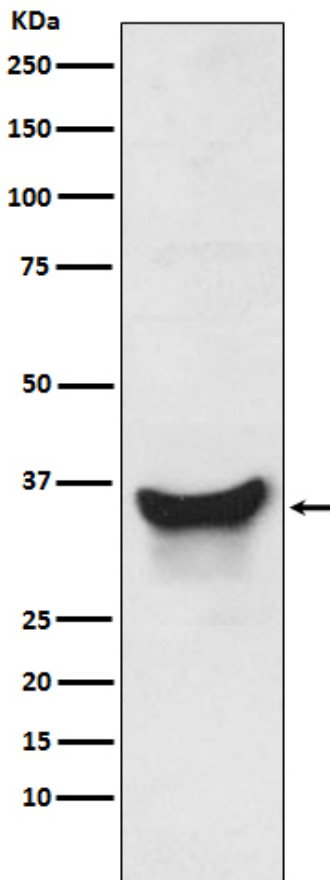
## Storage

12 months from date of receipt, -20°C as supplied.

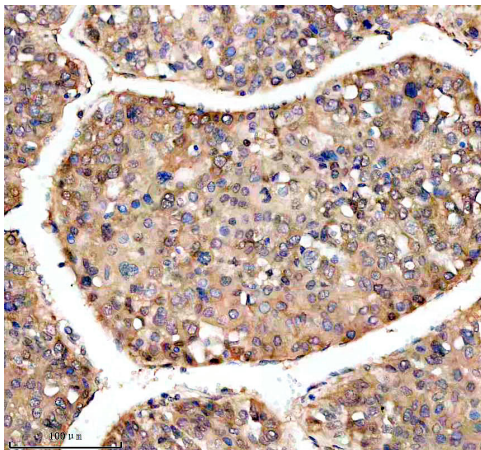
## Reference

Anti-BNIP3L Antibody (Clone#ABIB-2)被引用在3文献中。

## Selected Validation Data



Western blot analysis of BNIP3L expression in K562 cell lysate.



IHC analysis of BNIP3L using anti-BNIP3L antibody (BM5174) . BNIP3L was detected in a paraffin-embedded section of human liver cancer tissue. The tissue section was incubated with rabbit anti-BNIP3L Antibody (BM5174) at a dilution of 1:200 and developed using HRP Conjugated Rabbit IgG Super Vision Assay Kit (Catalog # SV0002) with DAB (Catalog # AR1027) as the chromogen.