

Basic Information

Product Name	Anti-Beclin 1/BECN1 Antibody (Clone#ADA-2)	
Gene Name	BECN1	
Source	Rabbit	
Clonality	Monoclonal	
Isotype	IgG	
Species Reactivity	human, mouse, rat	
Tested Application	WB, IHC, ICC/IF	
Contents	500 ug/ml; Rabbit IgG in phosphate buffered saline, pH 7.4, 150mM NaCl, 0.02% sodium azide, 0.4-0.5 mg/ml BSA and 50% glycerol.	
Immunogen	A synthesized peptide derived from human Beclin 1	
Concentration	500 ug/ml	
Purification	Affinity-chromatography	
Observed MW	52-60 kDa	
Dilution Ratios	Western blot (WB): 1:500-2000 Immunohistochemistry (IHC): 1:50-200 Immunocytochemistry/Immunofluorescence (ICC/IF):1:50-200	

Storage

12 months from date of receipt, -20°C as supplied. 6 months 2 to 8°C after reconstitution. Avoid repeated freezing and thawing.

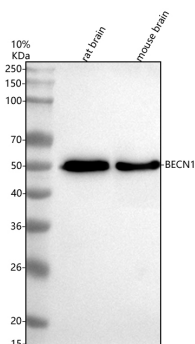
Background Information

Beclin-1, also known as also known as ATG6 or VPS30 is a protein that in humans is encoded by the BECN1 gene. Beclin-1 and its binding partner class III phosphoinositide 3-kinase (PI3K), also named Vps34, are required for the initiation of the formation of the autophagosome in autophagy. This gene participates in the regulation of autophagy and has an important role in development, tumorigenesis, and neurodegeneration. Schizophrenia is associated with low levels of Beclin-1 in the hippocampus of the affected which causes diminished autophagy which in turn results in increased neuronal cell death. It has been found that beclin-1 can promote autophagy in autophagy-defective yeast with a targeted disruption of apg6/vps30, and in human MCF7 breast carcinoma cells.

Reference

Anti-Beclin 1/BECN1 Antibody (Clone#ADA-2)被引用在6文献中。

Selected Validation Data



Western blot analysis of anti-Beclin 1/BECN1 antibody (BM5181).

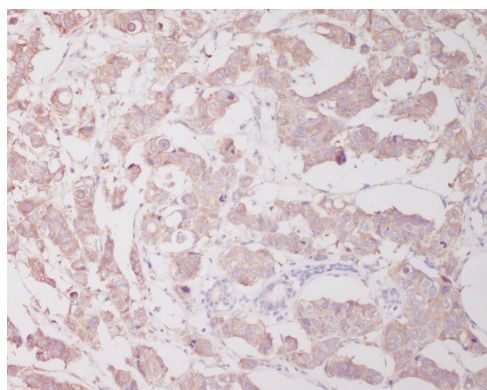
The sample well of each lane was loaded with 30 ug of sample under reducing conditions.

Lane 1: rat brain tissue lysates,

Lane 2: mouse brain tissue lysates.

After electrophoresis, proteins were transferred to a membrane.

Then the membrane was incubated with rabbit anti-Beclin 1/BECN1 antigen affinity purified monoclonal antibody (BM5181) at a dilution of 1:1000 and probed with a goat anti-rabbit IgG-HRP secondary antibody (Catalog # BA1054). The signal is developed using ECL Plus Western Blotting Substrate (Catalog # AR1197). A specific band was detected for Beclin 1/BECN1 at approximately 52 kDa. The expected band size for Beclin 1/BECN1 is at 52 kDa.



Immunohistochemical analysis of paraffin-embedded human breast cancer, using Beclin 1 Antibody.

Product datasheet

**Anti-Beclin 1/BECN1 Antibody
(Clone#ADA-2)**

Catalog Number: BM5181

BOSTER[®]

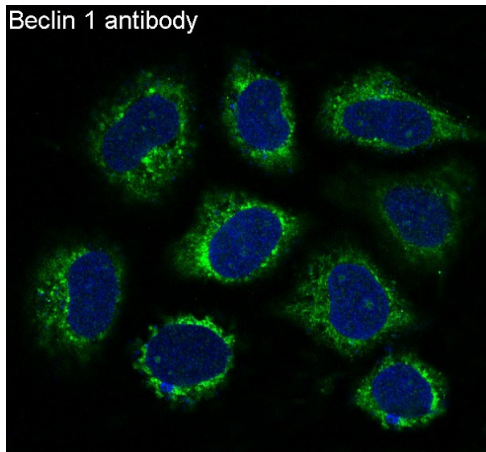
antibody and ELISA experts

BOSTER BIOLOGICAL TECHNOLOGY

Building C21, 3rd to 5th Floors, Optics Valley Biopharmaceutical Accelerator,
East Lake High-Tech Development Zone, Wuhan.

Web: www.boster.com **Phone:** 027-67845390/1/2 **Email:** boster@boster.com

Beclin 1 antibody



Immunofluorescent analysis of HeLa cells, using Beclin 1 Antibody.