

Basic Information

Product Name	Anti-TNF Beta/LTA Antibody (Clone#17L36)
Gene Name	LTA
Source	Rabbit
Clonality	Monoclonal
Isotype	IgG
Species Reactivity	human
Tested Application	WB
Contents	500 ug/ml; Rabbit IgG in phosphate buffered saline, pH 7.4, 150mM NaCl, 0.02% sodium azide, 0.4-0.5 mg/ml BSA and 50% glycerol.
Immunogen	A synthesized peptide derived from human TNF beta
Concentration	500ug/ml
Purification	Affinity-chromatography
Observed MW	22 kDa
Dilution Ratios	Western blot (WB):1:500-2000

Storage

12 months from date of receipt, -20°C as supplied.

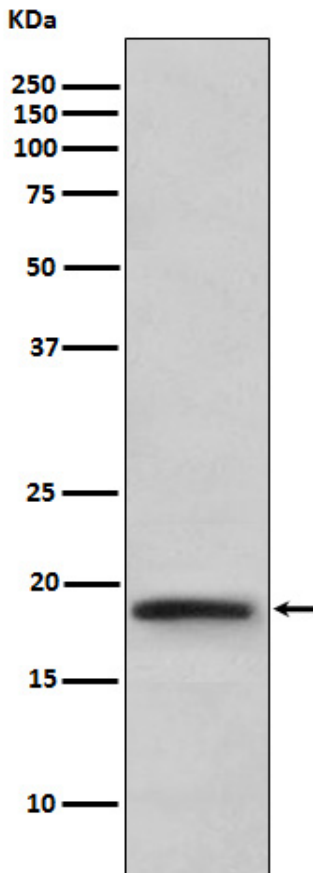
Background Information

Cytokine that in its homotrimeric form binds to TNFRSF1A/TNFR1, TNFRSF1B/TNFR and TNFRSF14/HVEM. In its heterotrimeric form with LTB binds to TNFRSF3/LTBR. Lymphotoxin is produced by lymphocytes and cytotoxic for a wide range of tumor cells in vitro and in vivo.

Reference

Anti-TNF Beta/LTA Antibody (Clone#17L36)被引用在1文献中。

Selected Validation Data



Western blot analysis of TNF beta expression in TNF beta recombinant protein.