

Basic Information

Product Name	Anti-Clusterin/CLU Antibody (Clone#17C92)		
Gene Name	CLU		
Source	Rabbit		
Clonality	Monoclonal		
Isotype	IgG		
Species Reactivity	human, mouse		
Tested Application	WB, IHC		
Contents	500 ug/ml; Rabbit IgG in phosphate buffered saline, pH 7.4, 150mM NaCl, 0.02% sodium azide, 0.4-0.5 mg/ml BSA and 50% glycerol.		
Immunogen	A synthesized peptide derived from human Clusterin		
Concentration	500 ug/ml		
Purification	Affinity-chromatography		
Observed MW	42-75 kDa		
Dilution Ratios	Western blot (WB): 1:500-2000 Immunohistochemistry (IHC):1:50-200		

Storage

12 months from date of receipt, -20°C as supplied.

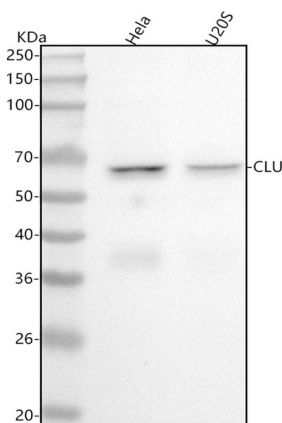
Background Information

Clusterin (CLU, apolipoprotein J) is a multifunctional glycoprotein that is expressed ubiquitously in most tissues. Clusterin functions as a secreted chaperone protein that interacts with and stabilizes stress-induced proteins to prevent their precipitation. Research studies show that clusterin plays a protective role in Alzheimer's disease by sequestering amyloid β (1-40) peptides to form long-lived, stable complexes, which prevents amyloid fibril formation.

Reference

Anti-Clusterin/CLU Antibody (Clone#17C92)被引用在3文献中。

Selected Validation Data



Western blot analysis of anti-Clusterin/CLU antibody (BM5346). The sample well of each lane was loaded with 30 ug of sample under reducing conditions.

Lane 1: human HeLa whole cell lysates,

Lane 2: human U2OS whole cell lysates.

After electrophoresis, proteins were transferred to a membrane. Then the membrane was incubated with rabbit anti-Clusterin/CLU antigen affinity purified monoclonal antibody (BM5346) at a dilution of 1:1000 and probed with a goat anti-rabbit IgG-HRP secondary antibody (Catalog # BA1054). The signal is developed using ECL Plus Western Blotting Substrate (Catalog # AR1197). A specific band was detected for Clusterin/CLU at approximately 65 kDa. The expected band size for Clusterin/CLU is at 52 kDa.