

Basic Information

Product Name	Anti-Hemopexin/HPX Antibody (Clone#ADAD-8)	
Gene Name	HPX	
Source	Rabbit	
Clonality	Monoclonal	
Isotype	IgG	
Species Reactivity	human	
Tested Application	WB, IHC, ICC/IF, IP	
Contents	500 ug/ml; Rabbit IgG in phosphate buffered saline, pH 7.4, 150mM NaCl, 0.02% sodium azide, 0.4-0.5 mg/ml BSA and 50% glycerol.	
Immunogen	A synthesized peptide derived from human Hemopexin Binds heme and transports it to the liver for breakdown and iron recovery, after which the free hemopexin returns to the circulation.	
Concentration	500 ug/ml	
Purification	Affinity-chromatography	
Observed MW	70-75 kDa	
Dilution Ratios	Western blot (WB):	1:500-2000
	Immunohistochemistry (IHC):	1:50-200
	Immunocytochemistry/Immunofluorescence (ICC/IF):	1:50-200
	ImmunoPrecipitation (IP):	1:20

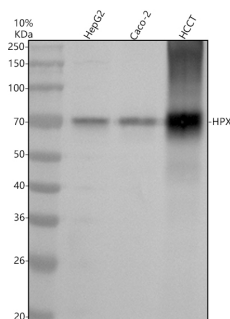
Storage

12 months from date of receipt, -20°C as supplied.

Reference

Anti-Hemopexin/HPX Antibody (Clone#ADAD-8)被引用在1文献中。

Selected Validation Data



Western blot analysis of anti-Hemopexin/HPX antibody (BM5363).

The sample well of each lane was loaded with 30 ug of sample under reducing conditions.

Lane 1: human HepG2 whole cell lysates,

Lane 2: human Caco-2 whole cell lysates,

Lane 3: human HCCT whole cell lysates.

After electrophoresis, proteins were transferred to a membrane.

Then the membrane was incubated with rabbit anti-Hemopexin/HPX antigen affinity purified monoclonal antibody (BM5363) at a dilution of 1:1000 and probed with a goat anti-rabbit IgG-HRP secondary antibody (Catalog # BA1054). The signal is developed using ECL Plus Western Blotting Substrate (Catalog # AR1197). A specific band was detected for Hemopexin/HPX at approximately 70 kDa. The expected band size for Hemopexin/HPX is at 52 kDa.