

Basic Information

Product Name	Anti-TRPM7 Antibody (Clone#ADGD-20)	
Gene Name	TRPM7	
Source	Rabbit	
Clonality	Monoclonal	
Isotype	IgG	
Species Reactivity	human, mouse, rat	
Tested Application	WB, ICC/IF, FCM	
Contents	500 ug/ml; Rabbit IgG in phosphate buffered saline, pH 7.4, 150mM NaCl, 0.02% sodium azide, 0.4-0.5 mg/ml BSA and 50% glycerol.	
Immunogen	A synthesized peptide derived from human TRPM7	
Concentration	500 ug/ml	
Purification	Affinity-chromatography	
Observed MW	212 kDa	
Dilution Ratios	Western blot (WB):	1:500-2000
	Immunocytochemistry/Immunofluorescence (ICC/IF):	1:50-200
	Flow Cytometry (FCM):	1:100

Storage

12 months from date of receipt, -20°C as supplied.

Background Information

Transient receptor potential cation channel, subfamily M, member 7, also known as TRPM7, is a human gene encoding a protein of the same name. It is mapped to 15q21.2. This gene belongs to the melastatin subfamily of transient receptor potential family of ion channels. The protein encoded by this gene is both an ion channel and a serine/threonine protein kinase. The kinase activity is essential for the ion channel function, which serves to increase intracellular calcium levels and to help regulate magnesium ion homeostasis. The encoded protein is involved in cytoskeletal organization, cell adhesion, cell migration and organogenesis. Defects in this gene are a cause of amyotrophic lateral sclerosis-parkinsonism/dementia complex of Guam. The gene may also be associated with defects of cardiac function.

Reference

Product datasheet

Anti-TRPM7 Antibody (Clone#ADGD-20)

Catalog Number: **BM5443**

BOSTER[®]

antibody and ELISA experts

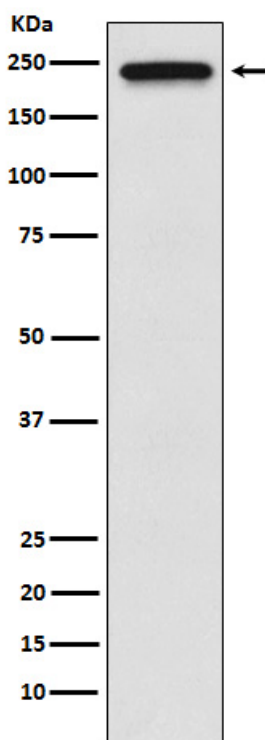
BOSTER BIOLOGICAL TECHNOLOGY

Building C21, 3rd to 5th Floors, Optics Valley Biopharmaceutical Accelerator,
East Lake High-Tech Development Zone, Wuhan.

Web: www.boster.com **Phone:** 027-67845390/1/2 **Email:** boster@boster.com

Anti-TRPM7 Antibody (Clone#ADGD-20)被引用在2文献中。

Selected Validation Data



Western blot analysis of TRPM7 expression in HeLa cell lysate.