

## Basic Information

<b>Product Name</b>	Anti-Glucagon/GCG Antibody (Clone#18G11)
<b>Gene Name</b>	GCG
<b>Source</b>	Rabbit
<b>Clonality</b>	Monoclonal
<b>Isotype</b>	IgG
<b>Species Reactivity</b>	human
<b>Tested Application</b>	WB
<b>Contents</b>	500 ug/ml; Rabbit IgG in phosphate buffered saline, pH 7.4, 150mM NaCl, 0.02% sodium azide, 0.4-0.5 mg/ml BSA and 50% glycerol.
<b>Immunogen</b>	A synthesized peptide derived from human GLP2
<b>Concentration</b>	500 ug/ml
<b>Observed MW</b>	21/11/4 kDa
<b>Dilution Ratios</b>	Western blot (WB):1:500-2000

## Storage

12 months from date of receipt, -20°C as supplied.

## Background Information

Human GLP2 (glucagon like peptide 2) is a peptide hormone of the glucagon family produced by the L cells of the intestinal mucosa and originates from the same prohormone as glucagon.

## Selected Validation Data

KDa

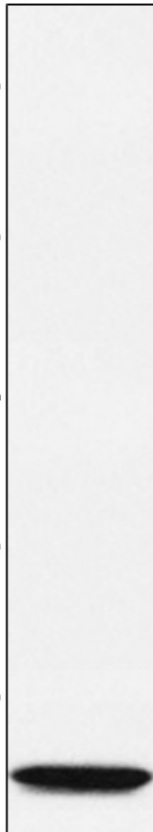
37

25

20

15

10



Western blot analysis of GLP2 expression in GLP2 recombinant protein lysate.