

Basic Information

Product Name	Anti-EPAC1/RAPGEF3 Antibody (Clone#AEOG-18)	
Gene Name	RAPGEF3	
Source	Rabbit	
Clonality	Monoclonal	
Isotype	IgG	
Species Reactivity	human, mouse, rat	
Tested Application	WB, IHC, ICC/IF, IP	
Contents	500 ug/ml; Rabbit IgG in phosphate buffered saline, pH 7.4, 150mM NaCl, 0.02% sodium azide, 0.4-0.5 mg/ml BSA and 50% glycerol.	
Immunogen	A synthesized peptide derived from human Epac1	
Concentration	500 ug/ml	
Purification	Affinity-chromatography	
Observed MW	104 kDa	
Dilution Ratios	Western blot (WB):	1:500-2000
	Immunohistochemistry (IHC):	1:50-200
	Immunocytochemistry/Immunofluorescence (ICC/IF):	1:50-200
	ImmunoPrecipitation (IP):	1:50

Storage

12 months from date of receipt, -20°C as supplied.

Background Information

Rap guanine nucleotide exchange factor 3 also known as exchange factor directly activated by cAMP 1 (EPAC1) or cAMP-regulated guanine nucleotide exchange factor I (cAMP-GEFI) is a protein that in humans is encoded by the RAPGEF3 gene. As the name suggests, EPAC proteins (EPAC1 and EPAC2) are a family of intracellular sensors for cAMP, and function as nucleotide exchange factors for the Rap subfamily of RAS-like small GTPases.

Selected Validation Data

Product datasheet
Anti-EPAC1/RAPGEF3 Antibody
(Clone#AEOG-18)
Catalog Number: BM5482

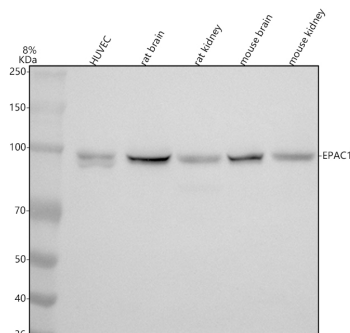
BOSTER[®]

antibody and ELISA experts

BOSTER BIOLOGICAL TECHNOLOGY

Building C21, 3rd to 5th Floors, Optics Valley Biopharmaceutical Accelerator,
East Lake High-Tech Development Zone, Wuhan.

Web: www.boster.com **Phone:** 027-67845390/1/2 **Email:** boster@boster.com



Western blot analysis of anti-EPAC1/RAPGEF3 antibody (BM5482).

The sample well of each lane was loaded with 30 ug of sample under reducing conditions.

Lane 1: human HUVEC whole cell lysates,

Lane 2: rat brain tissue lysates,

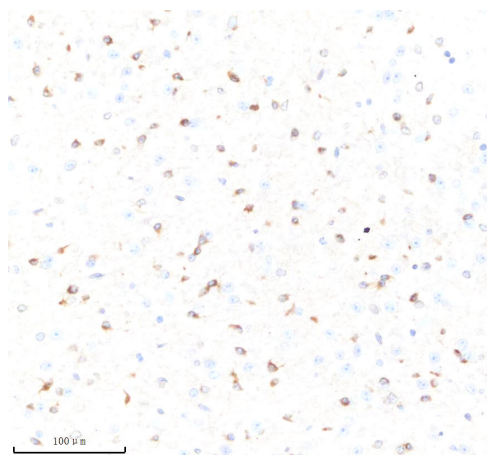
Lane 3: rat kidney tissue lysates,

Lane 4: mouse brain tissue lysates,

Lane 5: mouse kidney tissue lysates.

After electrophoresis, proteins were transferred to a membrane.

Then the membrane was incubated with rabbit anti-EPAC1/RAPGEF3 antigen affinity purified monoclonal antibody (BM5482) at a dilution of 1:1000 and probed with a goat anti-rabbit IgG-HRP secondary antibody (Catalog # BA1054). The signal is developed using ECL Plus Western Blotting Substrate (Catalog # AR1197). A specific band was detected for EPAC1/RAPGEF3 at approximately 104 kDa. The expected band size for EPAC1/RAPGEF3 is at 104 kDa.



IHC analysis of EPAC1/RAPGEF3 using anti-EPAC1/RAPGEF3 antibody (BM5482) .

EPAC1/RAPGEF3 was detected in a paraffin-embedded section of mouse brain tissue. The tissue section was incubated with rabbit anti-EPAC1/RAPGEF3 Antibody (BM5482) at a dilution of 1:200 and developed using HRP Conjugated Rabbit IgG Super Vision Assay Kit (Catalog # SV0002) with DAB (Catalog # AR1027) as the chromogen.