

Basic Information

Product Name	Anti-Mast Cell Chymase/CMA1 Antibody (Clone#18C83)		
Gene Name	CMA1		
Source	Rabbit		
Clonality	Monoclonal		
Isotype	IgG		
Species Reactivity	human		
Tested Application	WB, IHC		
Contents	500 ug/ml; Rabbit IgG in phosphate buffered saline, pH 7.4, 150mM NaCl, 0.02% sodium azide, 0.4-0.5 mg/ml BSA and 50% glycerol.		
Immunogen	A synthesized peptide derived from human Mast Cell Chymase		
Concentration	500 ug/ml		
Observed MW	27-35 kDa		
Dilution Ratios	Western blot (WB): 1:500-2000 Immunohistochemistry (IHC):1:50-200		

Storage

12 months from date of receipt, -20°C as supplied.

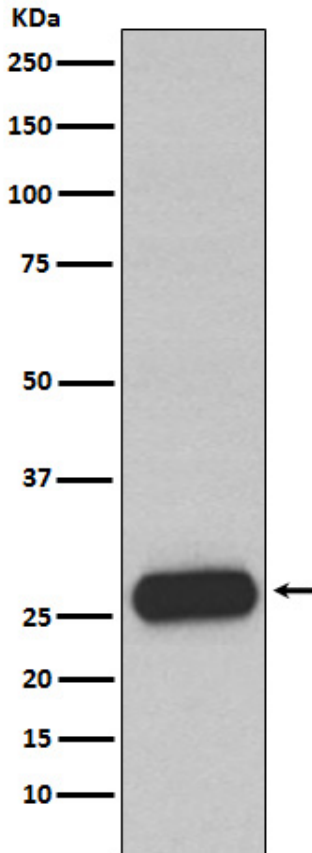
Background Information

Major secreted protease of mast cells with suspected roles in vasoactive peptide generation, extracellular matrix degradation, and regulation of gland secretion.

Selected Validation Data

**Anti-Mast Cell Chymase/CMA1 Antibody
(Clone#18C83)**

Catalog Number: BM5574



Western blot analysis of Mast Cell Chymase expression in Human small intestine lysate.