

Basic Information

Product Name	Anti-CD3 Gamma/CD3G Antibody (Clone#19C76)	
Gene Name	CD3G	
Source	Rabbit	
Clonality	Monoclonal	
Isotype	IgG	
Species Reactivity	human, mouse	
Tested Application	WB, IHC, ICC/IF, IP, FCM	
Contents	500 ug/ml; Rabbit IgG in phosphate buffered saline, pH 7.4, 150mM NaCl, 0.02% sodium azide, 0.4-0.5 mg/ml BSA and 50% glycerol.	
Immunogen	A synthesized peptide derived from human CD3G	
Concentration	500 ug/ml	
Observed MW	20 kDa	
Dilution Ratios	Western blot (WB):	1:500-2000
	Immunohistochemistry (IHC):	1:50-200
	Immunocytochemistry/Immunofluorescence (ICC/IF):	1:50-200
	ImmunoPrecipitation (IP):	1:50
	Flow Cytometry (FCM):	1:60

Storage

12 months from date of receipt, -20°C as supplied.

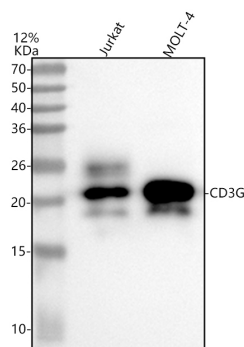
Background Information

The CD3 complex mediates signal transduction.

Reference

Anti-CD3 Gamma/CD3G Antibody (Clone#19C76)被引用在1文献中。

Selected Validation Data



Western blot analysis of anti-CD3 Gamma/CD3G antibody (BM5652).

The sample well of each lane was loaded with 30 ug of sample under reducing conditions.

Lane 1: human Jurkat whole cell lysates,

Lane 2: human MOLT-4 whole cell lysates.

After electrophoresis, proteins were transferred to a membrane.

Then the membrane was incubated with rabbit anti-CD3 Gamma/CD3G antigen affinity purified monoclonal antibody (BM5652) at a dilution of 1:1000 and probed with a goat anti-rabbit IgG-HRP secondary antibody (Catalog # BA1054). The signal is developed using ECL Plus Western Blotting Substrate (Catalog # AR1197). A specific band was detected for CD3 Gamma/CD3G at approximately 20 kDa. The expected band size for CD3 Gamma/CD3G is at 20 kDa.