

Basic Information

Product Name	Anti-GSTP1 Antibody (Clone#AFDG-7)		
Gene Name	GSTP1		
Source	Rabbit		
Clonality	Monoclonal		
Isotype	IgG		
Species Reactivity	human, mouse, rat		
Tested Application	WB, IHC, ICC/IF		
Contents	500 ug/ml; Rabbit IgG in phosphate buffered saline, pH 7.4, 150mM NaCl, 0.02% sodium azide, 0.4-0.5 mg/ml BSA and 50% glycerol.		
Immunogen	A synthesized peptide derived from human GST3 / GST pi Conjugation of reduced glutathione to a wide number of exogenous and endogenous hydrophobic electrophiles.		
Concentration	500 ug/ml		
Purification	Affinity-chromatography		
Observed MW	23 kDa		
Dilution Ratios	Western blot (WB):	1:500-2000	
	Immunohistochemistry (IHC):	1:50-200	
	Immunocytochemistry/Immunofluorescence (ICC/IF):	1:50-200	

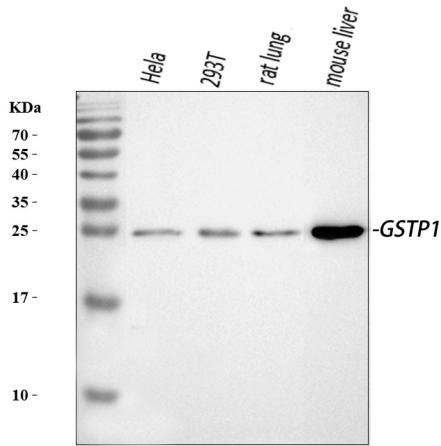
Storage

12 months from date of receipt, -20°C as supplied.

Background Information

Glutathione S-transferases pi (GSTP1), also known as GST3, is an enzyme that in humans is encoded by the GSTP1 gene. This gene is mapped to 11q13.2. GSTP1 has 7 exons and 6 introns contained within approximately 2.8 kilobases. GSTP1 belongs to Glutathione S-transferases (GSTs) which are a family of enzymes that play an important role in detoxification by catalyzing the conjugation of many hydrophobic and electrophilic compounds with reduced glutathione. GSTP1 presents in all tissues and cells, with the exception of red cells, in which only erythrocyte GST(GSTe) is observed. What's more, GSTP1 is a polymorphic gene encoding active, functionally different GSTP1 variant proteins that are thought to function in xenobiotic metabolism and play a role in susceptibility to cancer, and other diseases.

Selected Validation Data



Western blot analysis of anti- GSTP1 antibody (BM5712). The sample well of each lane was loaded with 50ug of sample under reducing conditions.

Lane 1: HELA whole cell lysates,

Lane 2: 293T whole cell lysates,

Lane 3: rat lung tissue lysates,

Lane 4: mouse liver tissue lysates.

Use rabbit anti- GSTP1 1:1000, probed with a goat anti-rabbit IgG-HRP secondary antibody. The signal is developed using an Enhanced Chemiluminescent detection (ECL) kit (Catalog # EK1002). A specific band was detected for GSTP1 at approximately 23KD. The expected band size for GSTP1 is at 23KD.