

## Basic Information

<b>Product Name</b>	Anti-PRKAR1A Antibody (Clone#20P51)	
<b>Gene Name</b>	PRKAR1A	
<b>Source</b>	Rabbit	
<b>Clonality</b>	Monoclonal	
<b>Isotype</b>	IgG	
<b>Species Reactivity</b>	human, mouse, rat	
<b>Tested Application</b>	WB, IHC, ICC/IF	
<b>Contents</b>	500 ug/ml; Rabbit IgG in phosphate buffered saline, pH 7.4, 150mM NaCl, 0.02% sodium azide, 0.4-0.5 mg/ml BSA and 50% glycerol.	
<b>Immunogen</b>	A synthesized peptide derived from human PRKAR1A	
<b>Concentration</b>	500 ug/ml	
<b>Observed MW</b>	43 kDa	
<b>Dilution Ratios</b>	Western blot (WB): 1:500-2000 Immunohistochemistry (IHC): 1:50-200 Immunocytochemistry/Immunofluorescence (ICC/IF): 1:50-200	

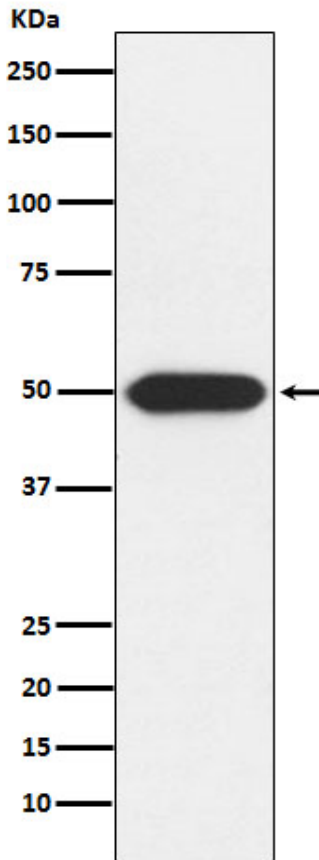
## Storage

12 months from date of receipt, -20°C as supplied.

## Background Information

Regulatory subunit of the cAMP-dependent protein kinases involved in cAMP signaling in cells.

## Selected Validation Data



Western blot analysis of Protein Kinase A regulatory subunit I alpha expression in U-87MG cell lysate.