

## Basic Information

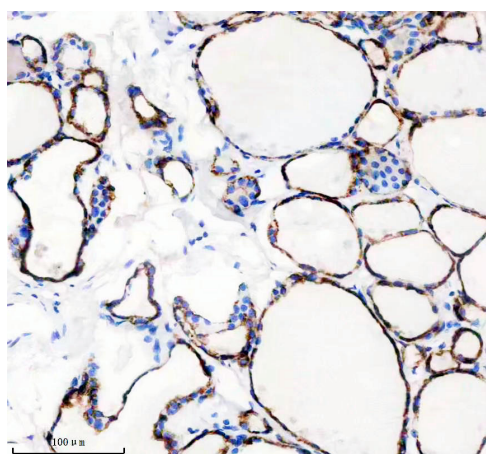
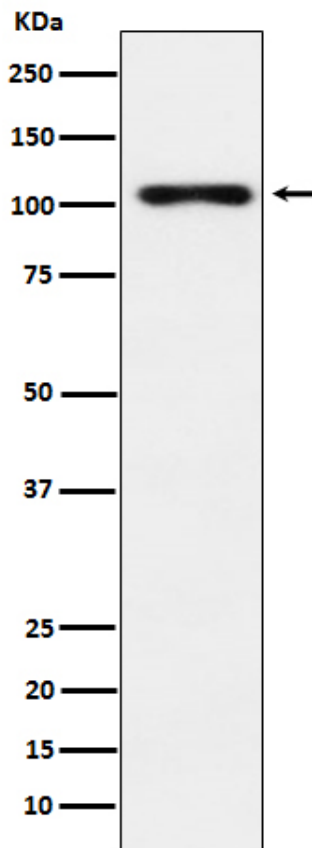
<b>Product Name</b>	Anti-TPO Antibody (Clone#AFFI-20)
<b>Gene Name</b>	TPO
<b>Source</b>	Rabbit
<b>Clonality</b>	Monoclonal
<b>Isotype</b>	IgG
<b>Species Reactivity</b>	human
<b>Tested Application</b>	WB, IHC, IP
<b>Contents</b>	500 ug/ml; Rabbit IgG in phosphate buffered saline, pH 7.4, 150mM NaCl, 0.02% sodium azide, 0.4-0.5 mg/ml BSA and 50% glycerol.
<b>Immunogen</b>	A synthesized peptide derived from human TPO Iodination and coupling of the hormonogenic tyrosines in thyroglobulin to yield the thyroid hormones T (3) and T (4) .
<b>Concentration</b>	500 ug/ml
<b>Purification</b>	Affinity-chromatography
<b>Observed MW</b>	103 kDa
<b>Dilution Ratios</b>	Western blot (WB): 1:500-2000 Immunohistochemistry (IHC):1:50-200 ImmunoPrecipitation (IP): 1:40

## Storage

12 months from date of receipt, -20°C as supplied.

## Selected Validation Data

Western blot analysis of TPO expression in Human thyroid lysate.



IHC analysis of TPO using anti-TPO antibody (BM5752).

TPO was detected in a paraffin-embedded section of human thyroid tissue. The tissue section was incubated with rabbit anti-TPO Antibody (BM5752) at a dilution of 1:200 and developed using HRP Conjugated Rabbit IgG Super Vision Assay Kit (Catalog # SV0002) with DAB (Catalog # AR1027) as the chromogen.