

## Basic Information

Product Name	Anti-HIF-1 alpha/HIF1A Antibody (Clone#31H88)
Gene Name	HIF1A
Source	Rabbit
Clonality	Monoclonal
Isotype	IgG
Species Reactivity	human, mouse, rat
Tested Application	WB, ICC/IF
Contents	500 ug/ml; Rabbit IgG in phosphate buffered saline, pH 7.4, 150mM NaCl, 0.02% sodium azide, 0.4-0.5 mg/ml BSA and 50% glycerol.
Immunogen	A synthesized peptide derived from human HIF-1-alpha
Concentration	500 ug/ml
Purification	Affinity-chromatography
Observed MW	120 kDa
Dilution Ratios	Western blot (WB): 1:500-2000 Immunocytochemistry/Immunofluorescence (ICC/IF):1:50-200

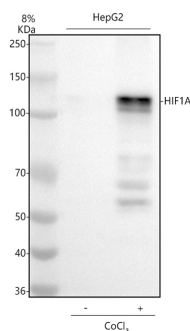
## Storage

12 months from date of receipt, -20°C as supplied.

## Reference

Anti-HIF-1 alpha/HIF1A Antibody (Clone#31H88)被引用在4文献中。

## Selected Validation Data



Western blot analysis of anti-HIF-1 alpha/HIF1A antibody (M00013-4). The sample well of each lane was loaded with 30 ug of sample under reducing conditions.

Lane 1: human Hela whole cell lysates.

After electrophoresis, proteins were transferred to a membrane. Then the membrane was incubated with rabbit anti-HIF-1 alpha/HIF1A antigen affinity purified monoclonal antibody (M00013-4) at a dilution of 1:1000 and probed with a goat anti-rabbit IgG-HRP secondary antibody (Catalog # BA1054). The signal is developed using ECL Plus Western Blotting Substrate (Catalog # AR1197). A specific band was detected for HIF-1 alpha/HIF1A at approximately 110 kDa. The expected band size for HIF-1 alpha/HIF1A is at 93 kDa.