

Basic Information

Product Name	Anti-ER/ESR1 Antibody (Clone#21E49)	
Gene Name	ESR1	
Source	Rabbit	
Clonality	Monoclonal	
Isotype	IgG	
Species Reactivity	human	
Tested Application	WB, IHC, ICC/IF, FCM	
Contents	500 ug/ml; Rabbit IgG in phosphate buffered saline, pH 7.4, 150mM NaCl, 0.02% sodium azide, 0.4-0.5 mg/ml BSA and 50% glycerol.	
Immunogen	A synthesized peptide derived from human Estrogen Receptor alpha	
Concentration	500 ug/ml	
Purification	Affinity-chromatography	
Observed MW	66 kDa	
Dilution Ratios	Western blot (WB):	1:500-2000
	Immunohistochemistry (IHC):	1:50-200
	Immunocytochemistry/Immunofluorescence (ICC/IF):	1:50-200
	Flow Cytometry (FCM):	1:50

Storage

12 months from date of receipt, -20°C as supplied. 6 months 2 to 8°C after reconstitution. Avoid repeated freezing and thawing.

Background Information

Estrogen receptor alpha (ER- α), also known as NR3A1, is one of two main types of estrogen receptor, a nuclear receptor that is activated by the sex hormone estrogen. Estrogen receptors are involved in pathological processes including breast cancer, endometrial cancer, and osteoporosis. In humans, ER- α is encoded by the gene ESR1 (Estrogen Receptor 1). It is mapped to 6q25.1. This gene is a ligand-activated transcription factor composed of several domains important for hormone binding, DNA binding, and activation of transcription. The protein localizes to the nucleus where it may form a homodimer or a heterodimer with estrogen receptor 2. Estrogen and its receptors are essential for sexual development and reproductive function, it also play a role in other tissues such as bone.

Reference

Product datasheet

**Anti-ER/ESR1 Antibody
(Clone#21E49)**

Catalog Number: M00057-4

BOSTER

antibody and ELISA experts

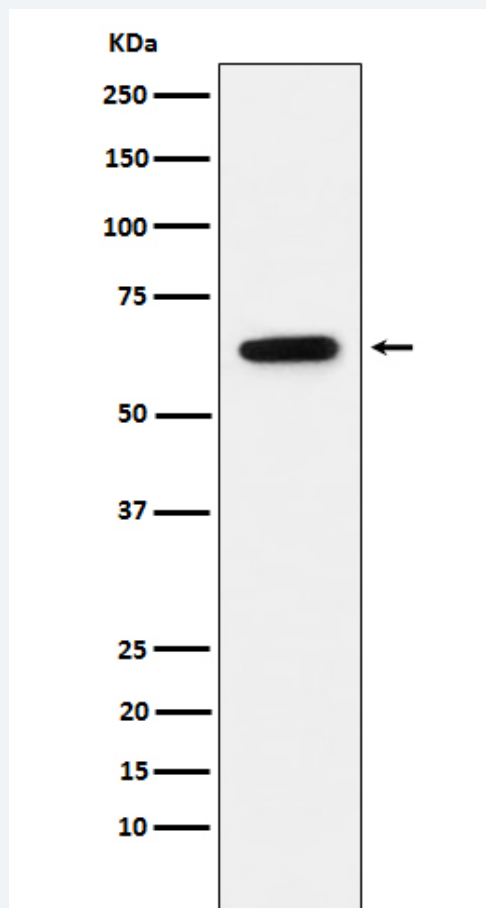
BOSTER BIOLOGICAL TECHNOLOGY

Building C21, 3rd and 4th floors, Optics Valley Biomedical Accelerator,
Wuhan East Lake High-tech Development Zone

Web: www.boster.com **Phone:** 027-67845390 **Email:** boster@boster.com

Anti-ER/ESR1 Antibody (Clone#21E49)被引用在4文献中。

Selected Validation Data



Western blot analysis of Estrogen Receptor alpha expression in MCF7 cell lysate.