

Basic Information

Product Name	Anti-IRF3 Antibody (Clone#OTI5D2)
Gene Name	IRF3
Source	Mouse
Clonality	Monoclonal
Isotype	IgG2b
Species Reactivity	human, monkey
Tested Application	WB, IHC
Contents	PBS (pH 7.3) containing 1% BSA, 50% glycerol and 0.02% sodium azide.
Immunogen	Full-length protein expressed in 293T cell transfected with human IRF3 expression vector
Concentration	500 ug/ml
Purification	Purified from mouse ascites fluids or tissue culture supernatant by affinity chromatography (protein A/G)
Observed MW	47.2 kDa
Dilution Ratios	Western blot (WB): 1:2000 Immunohistochemistry (IHC):1:50

Storage

Stable for 12 months from date of receipt. Store at -20°C as received.

Background Information

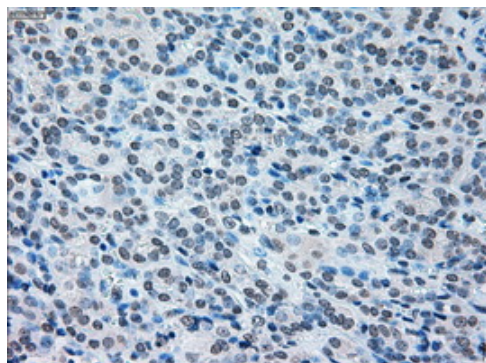
IRF3(interferon regulatory factor 3) is a member of the interferon regulatory transcription factor(IRF) family. The IRF3 gene is mapped on 19q13.33. IRF3 is found in an inactive cytoplasmic form that upon serine/threonine phosphorylation forms a complex with CREBBP. IRF3 plays an important role in the innate immune system's response to viral infection. Aggregated MAVS have been found to activate IRF3 dimerization. Although IRF3 increased transcriptional activity from an ISRE-containing promoter, expression of IRF3 as a Gal4 fusion protein did not activate expression of a chloramphenicol acetyltransferase(CAT) reporter gene containing repeats of the Gal4-binding sites. Translocation of IRF3 was accompanied by an increase in serine and threonine phosphorylation. The transcriptional activators CREBBP and EP300 coimmunoprecipitated with IRF3 only subsequent to viral infection, and the authors stated that these are also subunits of DRAF1.

Selected Validation Data

170 —
130 —
100 —
70 —
55 —
40 —
35 —
25 —
15 —
10 —



HEK293T cells were transfected with the pCMV6-ENTRY control (Left lane) or pCMV6-ENTRY IRF3 (Right lane) cDNA for 48 hrs and lysed. Equivalent amounts of cell lysates (5 ug per lane) were separated by SDS-PAGE and immunoblotted with anti-IRF3 (1:500).



Immunohistochemical staining of paraffin-embedded Carcinoma of thyroid tissue using anti-IRF3 mouse monoclonal antibody. (Heat-induced epitope retrieval by 10mM citric buffer)