

Basic Information

Product Name	Anti-CA1 Antibody (Clone#19C89)		
Gene Name	CA1		
Source	Rabbit		
Clonality	Monoclonal		
Isotype	IgG		
Species Reactivity	human, mouse, rat		
Tested Application	WB, IHC, ICC/IF		
Contents	500 ug/ml; Rabbit IgG in phosphate buffered saline, pH 7.4, 150mM NaCl, 0.02% sodium azide, 0.4-0.5 mg/ml BSA and 50% glycerol.		
Immunogen	A synthesized peptide derived from human Carbonic Anhydrase 1		
Concentration	500 ug/ml		
Purification	Affinity-chromatography		
Observed MW	29 kDa		
Dilution Ratios	Western blot (WB):	1:1000-5000	
	Immunohistochemistry (IHC):	1:50-200	
	Immunocytochemistry/Immunofluorescence (ICC/IF):	1:50-200	

Storage

12 months from date of receipt, -20°C as supplied.

Background Information

Carbonic anhydrase 1 is an enzyme that in humans is encoded by the CA1 gene. It is a member of the Carbonic anhydrase. The CA1 gene is mapped to 8q22. CAI has got about 260 amino acids. This protein is highly expressed in erythrocytes. As catalysts of the reversible hydration of carbon dioxide, CAI participates in a variety of biologic processes like respiration, calcification, acid-base balance etc.

Selected Validation Data

Product datasheet

Anti-CA1 Antibody (Clone#19C89)

Catalog Number: M00170-3

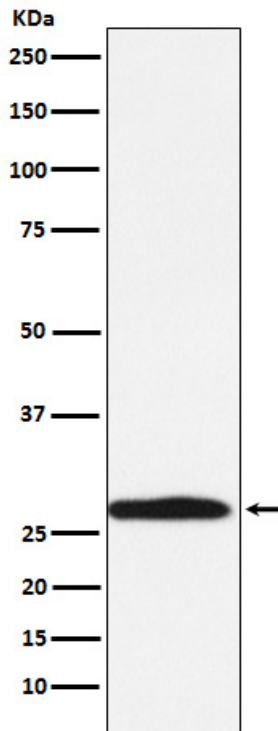
BOSTER[®]

antibody and ELISA experts

BOSTER BIOLOGICAL TECHNOLOGY

Building C21, 3rd to 5th Floors, Optics Valley Biopharmaceutical Accelerator,
East Lake High-Tech Development Zone, Wuhan.

Web: www.boster.com **Phone:** 027-67845390/1/2 **Email:** boster@boster.com



Western blot analysis of Carbonic Anhydrase 1 expression in K562 cell lysate.