

## Basic Information

<b>Product Name</b>	Anti-Bcl-XL/BCL2L1 Antibody (Clone#OTI4A9)
<b>Gene Name</b>	BCL2L1
<b>Source</b>	Mouse
<b>Clonality</b>	Monoclonal
<b>Isotype</b>	IgG2a
<b>Species Reactivity</b>	human, mouse, rat
<b>Tested Application</b>	IHC, ICC/IF, WB
<b>Contents</b>	PBS (pH 7.3) containing 1% BSA, 50% glycerol and 0.02% sodium azide.
<b>Immunogen</b>	Recombinant fragment expressed in E.coli corresponding to amino acids 1-212 of human Bcl-XL
<b>Concentration</b>	0.25 mg/ml
<b>Purification</b>	Purified from mouse ascites fluids or tissue culture supernatant by affinity chromatography (protein A/G)
<b>Observed MW</b>	25.9 kDa
<b>Dilution Ratios</b>	Western blot (WB): 1:200~1000 Immunocytochemistry/Immunofluorescence (ICC/IF):1:100

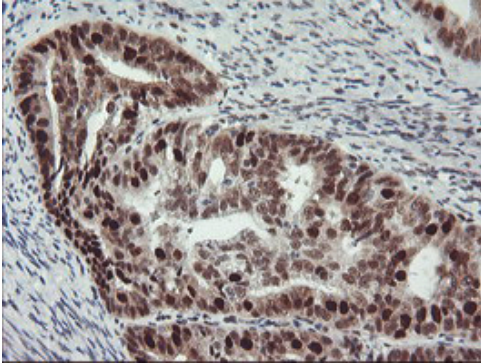
## Storage

Stable for 12 months from date of receipt. Store at -20°C as received.

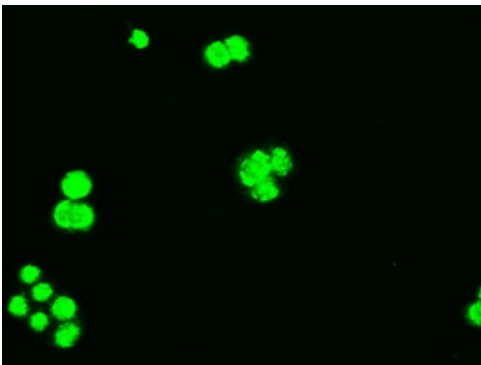
## Background Information

Bcl-2-like protein 1, also known as Bcl-XL, is a protein that in humans is encoded by the BCL2L1 gene. The protein encoded by this gene belongs to the BCL-2 protein family. BCL-2 family members form hetero- or homodimers and act as anti- or pro-apoptotic regulators that are involved in a wide variety of cellular activities. The proteins encoded by this gene are located at the outer mitochondrial membrane, and have been shown to regulate outer mitochondrial membrane channel (VDAC) opening. VDAC regulates mitochondrial membrane potential, and thus controls the production of reactive oxygen species and release of cytochrome C by mitochondria, both of which are the potent inducers of cell apoptosis. Alternative splicing results in multiple transcript variants encoding two different isoforms. The longer isoform (Bcl-xL) acts as an apoptotic inhibitor and the shorter form (Bcl-xS) acts as an apoptotic activator.

## Selected Validation Data



Immunohistochemical staining of paraffin-embedded Adenocarcinoma of Human endometrium tissue using anti-BCL-XL mouse monoclonal antibody. (M00181-2) (1:150)



Immunofluorescent staining of HT29 cells using anti-BCL2L1 mouse monoclonal antibody (1:50).

**Anti-Bcl-XL/BCL2L1 Antibody**  
**(Clone#OTI4A9)**

**Catalog Number: M00181-2**

Western blot analysis of extracts (10ug) from 3 different cell lines  
by using anti-BCL-XL monoclonal antibody (1:200).

