

Basic Information

Product Name	Anti-Ki67/MKI67 Antibody	
Gene Name	MKI67	
Source	Rabbit	
Clonality	Monoclonal	
Isotype	IgG	
Species Reactivity	human, mouse, rat	
Tested Application	IHC, IF, ICC/IF	
Contents	500 ug/ml; Rabbit IgG in phosphate buffered saline, pH 7.4, 150mM NaCl, 0.02% sodium azide, 0.4-0.5 mg/ml BSA and 50% glycerol.	
Immunogen	Recombinant protein with human Ki67 (Position: K2860-I3256).	
Concentration	500 ug/ml	
Purification	Immunogen affinity purified.	
Dilution Ratios	Immunohistochemistry (IHC):	1:50-200
	Immunofluorescence (IF):	1:50-200
	Immunocytochemistry/Immunofluorescence (ICC/IF):	1:50-200

Storage

12 months from date of receipt, -20°C as supplied. 6 months 2 to 8°C after reconstitution. Avoid repeated freezing and thawing.

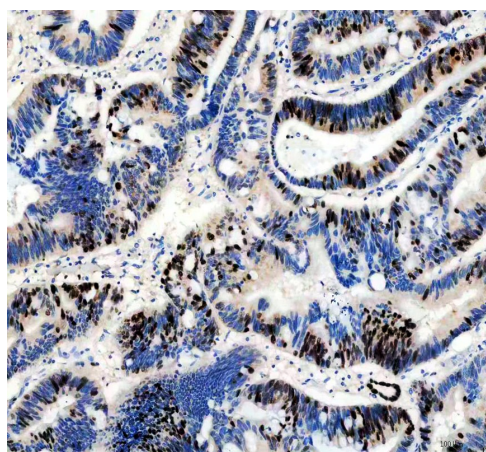
Background Information

Ki-67(Proliferation-related Ki-67 antigen), also known as MKI67 or KIA, is a protein that in humans is encoded by the MKI67 gene. From study of a panel of human-rodent somatic cell hybrids, it has been demonstrated that a gene involved in the expression of the MKI67 antigen is located on chromosome 10. By in situ hybridization, Fonatsch et al. (1991) regionalized the MKI67 gene to chromosome 10q25-qter. By FISH, Traut et al. (1998) mapped the mouse Mki67 gene to chromosome 7F3-F5. Antigen KI-67 is a nuclear protein that is associated with and may be necessary for cellular proliferation. Furthermore it is associated with ribosomal RNA transcription. Inactivation of antigen KI-67 leads to inhibition of ribosomal RNA synthesis.

Reference

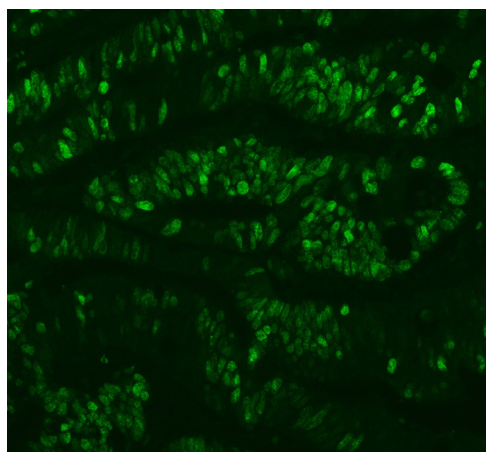
Anti-Ki67/MKI67 Antibody被引用在1文献中。

Selected Validation Data



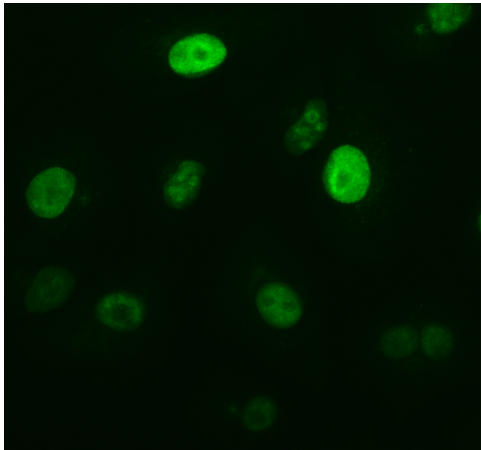
IHC analysis of Ki67/MKI67 using anti-Ki67/MKI67 antibody (M00254-11).

Ki67/MKI67 was detected in a paraffin-embedded section of human colon cancer tissue. The tissue section was incubated with rabbit anti-Ki67/MKI67 Antibody (M00254-11) at a dilution of 1:200 and developed using HRP Conjugated Rabbit IgG Super Vision Assay Kit (Catalog # SV0002) with DAB (Catalog # AR1027) as the chromogen.



IF analysis of Ki67/MKI67 using anti-Ki67/MKI67 antibody (M00254-11).

Ki67/MKI67 was detected in a paraffin-embedded section of human colon cancer tissue. The tissue section was incubated with rabbit anti-Ki67/MKI67 Antibody (M00254-11) at a dilution of 1:100. Fluoro488-conjugated Anti-rabbit IgG Secondary Antibody (green) (Catalog # BA1127) was used as secondary antibody.



ICC/IF analysis of Ki67/MKI67 using anti-Ki67/MKI67 antibody (M00254-11).

Ki67/MKI67 was detected in an immunocytochemical section of A549 cells. The section was incubated with rabbit anti-Ki67/MKI67 Antibody (M00254-11) at a dilution of 1:100. Fluoro488 Conjugated Goat Anti-Rabbit IgG (Green) (Catalog # BA1127) was used as secondary antibody.