

## Basic Information

Product Name	Anti-SOD2 (acetyl K68) Antibody (Clone#27S85)		
Gene Name	SOD2		
Source	Rabbit		
Clonality	Monoclonal		
Isotype	IgG		
Species Reactivity	human, mouse, rat		
Tested Application	WB, IHC		
Contents	500 ug/ml; Rabbit IgG in phosphate buffered saline, pH 7.4, 150mM NaCl, 0.02% sodium azide, 0.4-0.5 mg/ml BSA and 50% glycerol.		
Immunogen	A synthesized peptide derived from human SOD2 (acetyl K68)		
Concentration	500 ug/ml		
Purification	Affinity-chromatography		
Observed MW	25 kDa		
Dilution Ratios	Western blot (WB): 1:500-2000 Immunohistochemistry (IHC):1:50-200		

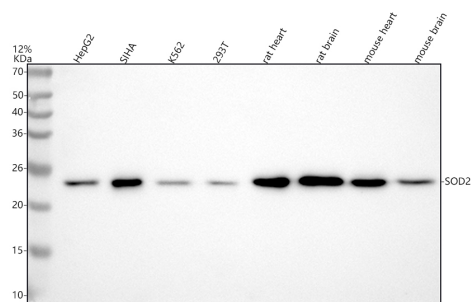
## Storage

12 months from date of receipt, -20°C as supplied.

## Reference

Anti-SOD2 (acetyl K68) Antibody (Clone#27S85)被引用在1文献中。

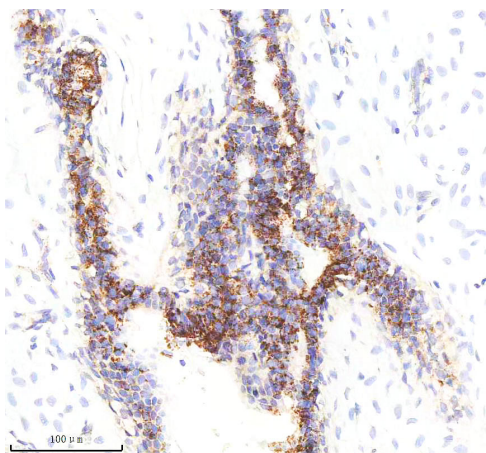
## Selected Validation Data



Western blot analysis of anti-SOD2 (acetyl K68) antibody (M00349-2). The sample well of each lane was loaded with 30 ug of sample under reducing conditions.

Lane 1: human HepG2 whole cell lysates,  
Lane 2: human SiHa whole cell lysates,  
Lane 3: human K562 whole cell lysates,  
Lane 4: human 293T whole cell lysates,  
Lane 5: rat heart tissue lysates,  
Lane 6: rat brain tissue lysates,  
Lane 7: mouse heart tissue lysates,  
Lane 8: mouse brain tissue lysates.

After electrophoresis, proteins were transferred to a membrane. Then the membrane was incubated with rabbit anti-SOD2 (acetyl K68) antigen affinity purified monoclonal antibody (M00349-2) at a dilution of 1:1000 and probed with a goat anti-rabbit IgG-HRP secondary antibody (Catalog # BA1054). The signal is developed using ECL Plus Western Blotting Substrate (Catalog # AR1197). A specific band was detected for SOD2 (acetyl K68) at approximately 25 kDa. The expected band size for SOD2 (acetyl K68) is at 25 kDa.



IHC analysis of SOD2 (acetyl K68) using anti-SOD2 (acetyl K68) antibody (M00349-2).

SOD2 (acetyl K68) was detected in a paraffin-embedded section of human breast cancer tissue. The tissue section was incubated with rabbit anti-SOD2 (acetyl K68) Antibody (M00349-2) at a dilution of 1:200 and developed using HRP Conjugated Rabbit IgG Super Vision Assay Kit (Catalog # SV0002) with DAB (Catalog # AR1027) as the chromogen.