

Basic Information

Product Name	Anti-IGFBP3 Antibody (Clone#OTI3B9)
Gene Name	IGFBP3
Source	Mouse
Clonality	Monoclonal
Isotype	IgG2b
Species Reactivity	human
Tested Application	WB
Contents	PBS (PH 7.3) containing 1% BSA, 50% glycerol and 0.02% sodium azide.
Immunogen	Human recombinant protein fragment corresponding to amino acids 28-297 of human IGFBP3(NP_001013416) produced in E.coli.
Concentration	500 ug/ml
Purification	Purified from mouse ascites fluids or tissue culture supernatant by affinity chromatography (protein A/G)
Observed MW	29.2 kDa
Dilution Ratios	Western blot (WB):1:2000

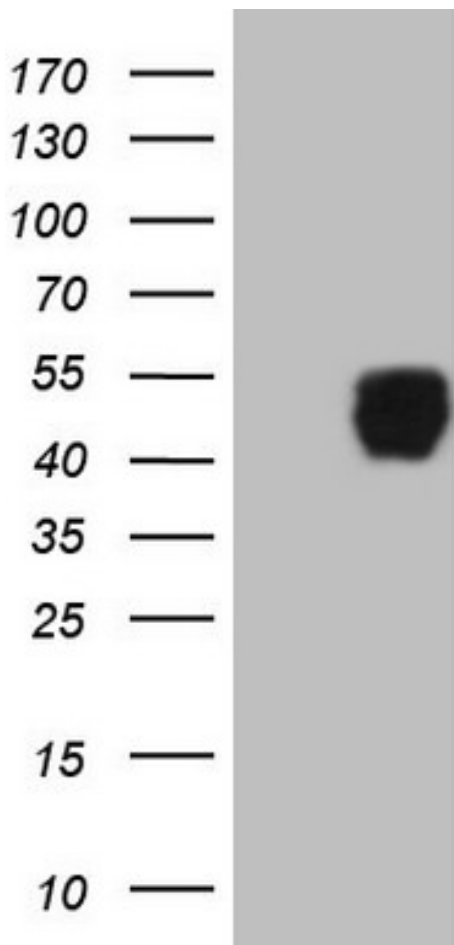
Storage

Stable for 12 months from date of receipt. Store at -20°C as received.

Background Information

This gene is a member of the insulin-like growth factor binding protein (IGFBP) family and encodes a protein with an IGFBP domain and a thyroglobulin type-I domain. The protein forms a ternary complex with insulin-like growth factor acid-labile subunit (IGFALS) and either insulin-like growth factor (IGF) I or II. In this form, it circulates in the plasma, prolonging the half-life of IGFs and altering their interaction with cell surface receptors. Alternate transcriptional splice variants, encoding different isoforms, have been characterized. [provided by RefSeq, Jul 2008]

Selected Validation Data



HEK293T cells were transfected with the pCMV6-ENTRY control (Left lane) or pCMV6-ENTRY IGFBP3 (Right lane) cDNA for 48 hrs and lysed. Equivalent amounts of cell lysates (5 ug per lane) were separated by SDS-PAGE and immunoblotted with anti-IGFBP3(Cat# M00435).