

## Basic Information

Product Name	Anti-Lamin A/C Antibody (Clone#22L53)	
Gene Name	LMNA	
Source	Rabbit	
Clonality	Monoclonal	
Isotype	IgG	
Species Reactivity	human, mouse, rat	
Tested Application	WB, IHC, ICC/IF, FCM	
Contents	500 ug/ml; Rabbit IgG in phosphate buffered saline, pH 7.4, 150mM NaCl, 0.02% sodium azide, 0.4-0.5 mg/ml BSA and 50% glycerol.	
Immunogen	A synthesized peptide derived from human Lamin A/C	
Concentration	500 ug/ml	
Purification	Affinity-chromatography	
Observed MW	74 kDa	
Dilution Ratios	Western blot (WB): 1:500-2000 Immunohistochemistry (IHC): 1:50-200 Immunocytochemistry/Immunofluorescence (ICC/IF): 1:50-200 Flow Cytometry (FCM): 1:50	

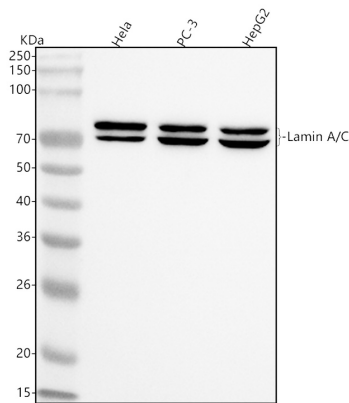
## Storage

12 months from date of receipt, -20°C as supplied.

## Reference

Anti-Lamin A/C Antibody (Clone#22L53)被引用在7文献中。

## Selected Validation Data



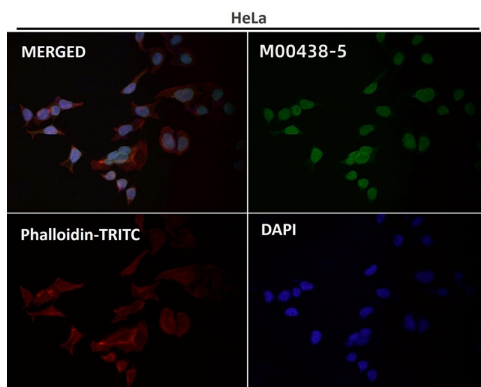
Western blot analysis of anti-Lamin A/C antibody (M00438-5). The sample well of each lane was loaded with 30 ug of sample under reducing conditions.

Lane 1: human HeLa whole cell lysates,

Lane 2: human PC-3 whole cell lysates,

Lane 3: human HepG2 whole cell lysates.

After electrophoresis, proteins were transferred to a membrane. Then the membrane was incubated with rabbit anti-Lamin A/C antigen affinity purified monoclonal antibody (M00438-5) at a dilution of 1:1000 and probed with a goat anti-rabbit IgG-HRP secondary antibody (Catalog # BA1054). The signal is developed using ECL Plus Western Blotting Substrate (Catalog # AR1197). A specific band was detected for Lamin A/C at approximately 70-74 kDa. The expected band size for Lamin A/C is at 74 kDa.



Immunofluorescent analysis using the Antibody.