

Basic Information

Product Name	Anti-AFP Antibody (Clone#OTI2F11)	
Gene Name	AFP	
Source	Mouse	
Clonality	Monoclonal	
Isotype	IgG2b	
Species Reactivity	human	
Tested Application	WB, IHC, ICC/IF	
Contents	PBS (PH 7.3) containing 1% BSA, 50% glycerol and 0.02% sodium azide.	
Immunogen	Human recombinant protein fragment corresponding to amino acids 19-397 of human AFP (NP_001125) produced in E.coli.	
Concentration	500 ug/ml	
Purification	Purified from mouse ascites fluids or tissue culture supernatant by affinity chromatography (protein A/G)	
Observed MW	69 kDa	
Dilution Ratios	Western blot (WB):	1:2000
	Immunohistochemistry (IHC):	1:150
	Immunocytochemistry/Immunofluorescence (ICC/IF):	1:100

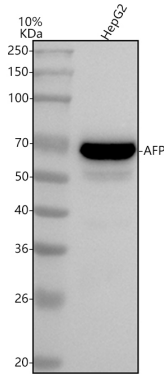
Storage

Stable for 12 months from date of receipt. Store at -20°C as received.

Background Information

This gene encodes alpha-fetoprotein, a major plasma protein produced by the yolk sac and the liver during fetal life. Alpha-fetoprotein expression in adults is often associated with hepatoma or teratoma. However, hereditary persistence of alpha-fetoprotein may also be found in individuals with no obvious pathology. The protein is thought to be the fetal counterpart of serum albumin, and the alpha-fetoprotein and albumin genes are present in tandem in the same transcriptional orientation on chromosome 4. Alpha-fetoprotein is found in monomeric as well as dimeric and trimeric forms, and binds copper, nickel, fatty acids and bilirubin. The level of alpha-fetoprotein in amniotic fluid is used to measure renal loss of protein to screen for spina bifida and anencephaly. [provided by RefSeq, Jul 2008]

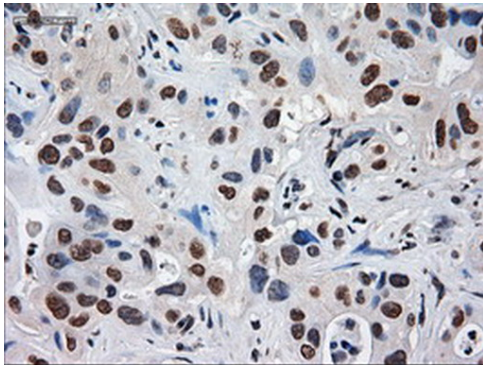
Selected Validation Data



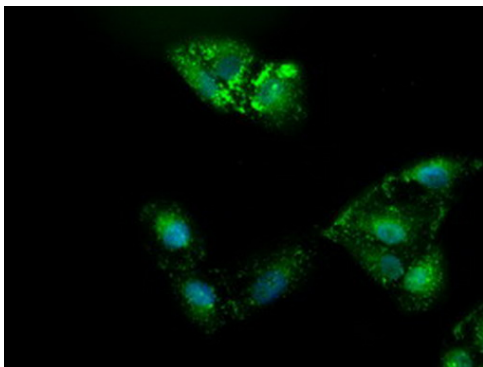
Western blot analysis of anti-AFP antibody (M00522-4). The sample well of each lane was loaded with 30 ug of sample under reducing conditions.

Lane 1: human HepG2 whole cell lysates.

After electrophoresis, proteins were transferred to a membrane. Then the membrane was incubated with mouse anti-AFP antigen affinity purified monoclonal antibody (M00522-4) at a dilution of 1:1000 and probed with a goat anti-mouse IgG-HRP secondary antibody (Catalog # BA1050). The signal is developed using ECL Plus Western Blotting Substrate (Catalog # AR1197). A specific band was detected for AFP at approximately 69 kDa. The expected band size for AFP is at 69 kDa.



Immunohistochemical staining of paraffin-embedded Carcinoma of Human liver tissue using anti-AFP mouse monoclonal antibody. (Heat-induced epitope retrieval by 1mM EDTA in 10mM Tris buffer (pH8.5) at 120°C for 3min, M00522-4) (1:150)



Immunofluorescent staining of A549 cells using anti-AFP mouse monoclonal antibody (1:100).