

Basic Information

Product Name	Anti-XRCC1 Antibody (Clone#OTI2F8)	
Gene Name	XRCC1	
Source	Mouse	
Clonality	Monoclonal	
Isotype	IgG1	
Species Reactivity	human, mouse, rat	
Tested Application	WB, IHC, ICC/IF	
Contents	PBS (pH 7.3) containing 1% BSA, 50% glycerol and 0.02% sodium azide.	
Immunogen	Full length human recombinant protein of human XRCC1 (NP_006288) produced in HEK293T cell.	
Concentration	500 ug/ml	
Purification	Purified from mouse ascites fluids or tissue culture supernatant by affinity chromatography (protein A/G)	
Observed MW	69.5 kDa	
Dilution Ratios	Western blot (WB):	1:2000
	Immunohistochemistry (IHC):	1:50
	Immunocytochemistry/Immunofluorescence (ICC/IF):	1:100

Storage

Stable for 12 months from date of receipt. Store at -20°C as received.

Background Information

The protein encoded by this gene is involved in the efficient repair of DNA single-strand breaks formed by exposure to ionizing radiation and alkylating agents. This protein interacts with DNA ligase III, polymerase beta and poly (ADP-ribose) polymerase to participate in the base excision repair pathway. It may play a role in DNA processing during meiosis and recombination in germ cells. A rare microsatellite polymorphism in this gene is associated with cancer in patients of varying radiosensitivity.

Product datasheet

Anti-XRCC1 Antibody (Clone#OTI2F8)

Catalog Number: **M00571-3**

BOSTER[®]

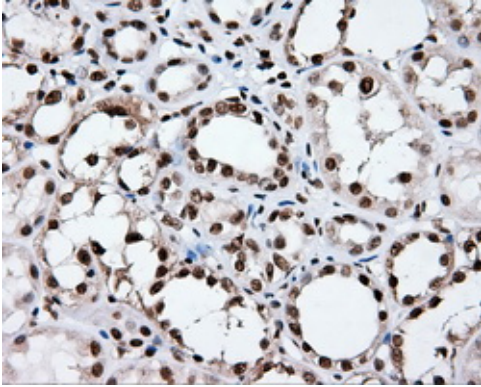
antibody and ELISA experts

BOSTER BIOLOGICAL TECHNOLOGY

Building C21, 3rd to 5th Floors, Optics Valley Biopharmaceutical Accelerator,
East Lake High-Tech Development Zone, Wuhan.

Web: www.boster.com **Phone:** 027-67845390/1/2 **Email:** boster@boster.com

Selected Validation Data



Immunohistochemical staining of paraffin-embedded Kidney tissue within the normal limits using anti-XRCC1 mouse monoclonal antibody. (Heat-induced epitope retrieval by 10mM citric buffer, pH6.0, 100°C for 10min, M00571-3, Dilution 1:50)