

Basic Information

Product Name	Anti-LOX Antibody (Clone#OTI5C4)	
Gene Name	LOX	
Source	Mouse	
Clonality	Monoclonal	
Isotype	IgG1	
Species Reactivity	human, mouse, rat, dog	
Tested Application	WB, IHC, ICC/IF	
Contents	PBS (pH 7.3) containing 1% BSA, 50% glycerol and 0.02% sodium azide.	
Immunogen	Human recombinant protein fragment corresponding to amino acids 22-168 of human LOX (NP_002308) produced in HEK293T cell.	
Concentration	500 ug/ml	
Purification	Purified from mouse ascites fluids or tissue culture supernatant by affinity chromatography (protein A/G)	
Observed MW	46.8 kDa	
Dilution Ratios	Western blot (WB):	1:2000
	Immunohistochemistry (IHC):	1:50
	Immunocytochemistry/Immunofluorescence (ICC/IF):	1:100

Storage

Stable for 12 months from date of receipt. Store at -20°C as received.

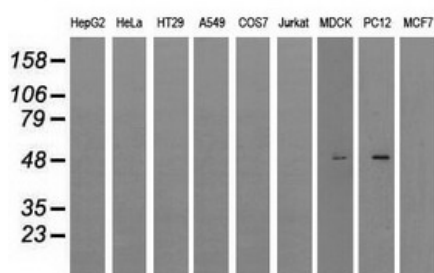
Background Information

The protein encoded by this gene is an extracellular copper enzyme that initiates the crosslinking of collagens and elastin. The enzyme catalyzes oxidative deamination of the epsilon-amino group in certain lysine and hydroxylysine residues of collagens and lysine residues of elastin. In addition to crosslinking extracellular matrix proteins, the encoded protein may have a role in tumor suppression. Defects in this gene are a cause of autosomal recessive cutis laxa type I (CL type I). Two transcript variants encoding different isoforms have been found for this gene. [provided by RefSeq]

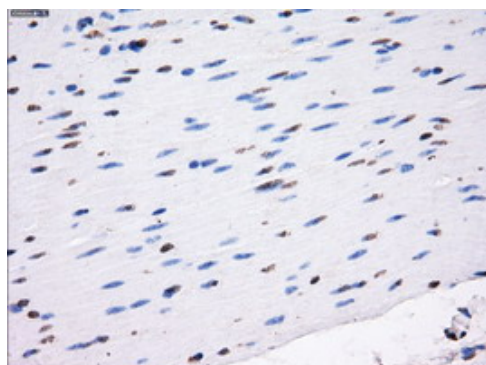
Reference

Anti-LOX Antibody (Clone#OTI5C4)被引用在1文献中。

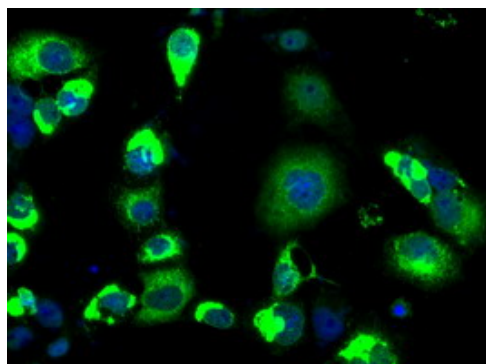
Selected Validation Data



Western blot analysis of extracts (35ug) from 9 different cell lines by using anti-LOX monoclonal antibody (HepG2: human; HeLa: human; SVT2: mouse; A549: human; COS7: monkey; Jurkat: human; MDCK: canine; PC12: rat; MCF7: human).



Immunohistochemical staining of paraffin-embedded Human colon tissue within the normal limits using anti-LOX mouse monoclonal antibody. (Heat-induced epitope retrieval by 10mM citric buffer, pH6.0, 100°C for 10min, M00575-2)



Anti-LOX mouse monoclonal antibody immunofluorescent staining of COS7 cells transiently transfected by pCMV6-ENTRY LOX.