

Basic Information

Product Name	Anti-Clusterin/CLU Antibody (Clone#30C68)		
Gene Name	CLU		
Source	Rabbit		
Clonality	Monoclonal		
Isotype	IgG		
Species Reactivity	mouse, rat		
Tested Application	WB, IHC, IP		
Contents	500 ug/ml; Rabbit IgG in phosphate buffered saline, pH 7.4, 150mM NaCl, 0.02% sodium azide, 0.4-0.5 mg/ml BSA and 50% glycerol.		
Immunogen	A synthesized peptide derived from human Clusterin		
Concentration	500 ug/ml		
Purification	Affinity-chromatography		
Observed MW	42-75 kDa		
Dilution Ratios	Western blot (WB): 1:500-2000 Immunohistochemistry (IHC):1:50-200 ImmunoPrecipitation (IP): 1:50		

Storage

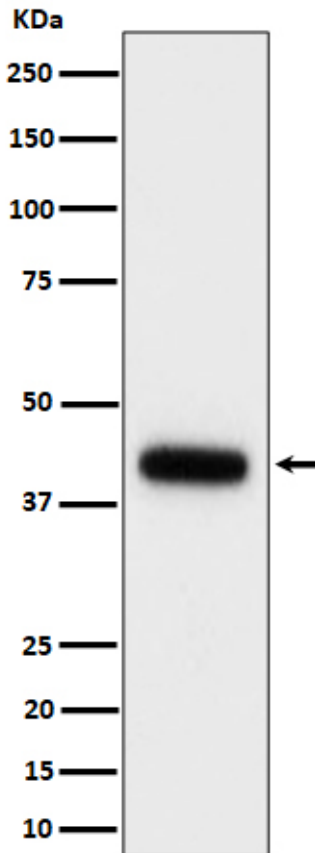
12 months from date of receipt, -20°C as supplied.

Reference

Anti-Clusterin/CLU Antibody (Clone#30C68)被引用在4文献中。

Selected Validation Data

Western blot analysis of Clusterin expression in mouse serum cell lysate.



Immunoprecipitate (IP) analysis using the Antibody. (wb)

