

Basic Information

Product Name	Anti-CYP2E1 Antibody (Clone#2C7G1)
Gene Name	CYP2E1
Source	Mouse
Clonality	Monoclonal
Isotype	IgG2b
Species Reactivity	human, mouse, rat
Tested Application	WB
Contents	500 ug/ml antibody with PBS, 0.02% NaN ₃ , 1 mg/ml BSA and 50% glycerol.
Immunogen	E. coli-derived human Cytochrome P450 2E1/CYP2E1 recombinant protein (Position: H355-S493). Human CYP2E1 shares 86.3% amino acid (aa) sequence identity with both mouse and rat CYP2E1.
Concentration	500 ug/ml
Purification	protein G purified.
Observed MW	57 kDa
Dilution Ratios	Western blot (WB):1:500-2000

Storage

12 months from date of receipt, -20°C as supplied.

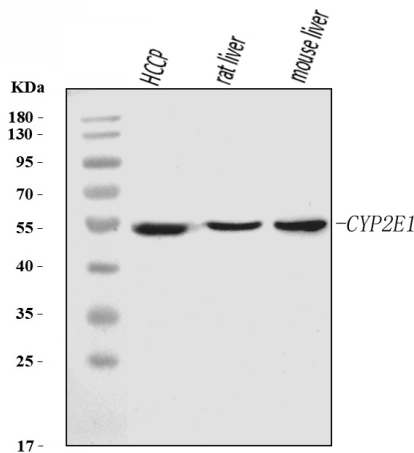
Background Information

Cytochrome P450 2E1 (abbreviated CYP2E1), a member of the cytochrome P450 mixed-function oxidase system, is involved in the metabolism of xenobiotics in the body. In humans, the CYP2E1 enzyme is encoded by the CYP2E1 gene. It is mapped to 10q26.3. While it is involved in the oxidative metabolism of a small range of substrates (mostly small polar molecules), there are many important drug interactions mediated by CYP2E1. Most drugs undergo deactivation by CYP2E1, either directly or by facilitated excretion from the body. Also, many substances are bioactivated by CYP2E1 to form their active compounds. In addition, CYP2E1 is an important enzyme for the conversion of ethanol to acetaldehyde and to acetate in humans. In the conversion sequence of acetyl-CoA to glucose, CYP2E1 transforms acetone via acetol into propylene glycol and methylglyoxal, the precursors of pyruvate, acetate and lactate.

Reference

Anti-CYP2E1 Antibody (Clone#2C7G1)被引用在10文献中。

Selected Validation Data



Western blot analysis of CYP2E1 using anti-CYP2E1 antibody (M00672-2).

The sample well of each lane was loaded with 30 ug of sample under reducing conditions.

Lane 1: HCCP tissue lysates,

Lane 2: rat liver tissue lysates,

Lane 3: mouse liver tissue lysates.

After electrophoresis, proteins were transferred to a membrane. Then the membrane was incubated with mouse anti-CYP2E1 antigen affinity purified monoclonal antibody (M00672-2) at a dilution of 1:1000 and probed with a goat anti-mouse IgG-HRP secondary antibody (Catalog # BA1050). The signal is developed using ECL Plus Western Blotting Substrate (Catalog # AR1197). A specific band was detected for CYP2E1 at approximately 57 kDa. The expected band size for CYP2E1 is at 57 kDa.