

Basic Information

Product Name	Anti-Alpha 1 Antitrypsin/SERPINA1 Antibody (Clone#OTI9A1)		
Gene Name	SERPINA1		
Source	Mouse		
Clonality	Monoclonal		
Isotype	IgG1		
Species Reactivity	human, dog, monkey		
Tested Application	WB, IHC, FCM		
Contents	PBS (pH 7.3) containing 1% BSA, 50% glycerol and 0.02% sodium azide.		
Immunogen	Full-length protein expressed in 293T cell transfected with human SERPINA1 expression vector		
Concentration	500 ug/ml		
Purification	Purified from mouse ascites fluids or tissue culture supernatant by affinity chromatography (protein A/G)		
Observed MW	46.7 kDa		
Dilution Ratios	Western blot (WB): 1:500~1000 Immunohistochemistry (IHC):1:150 Flow cytometry (FCM): 1:100		

Storage

Stable for 12 months from date of receipt. Store at -20°C as received.

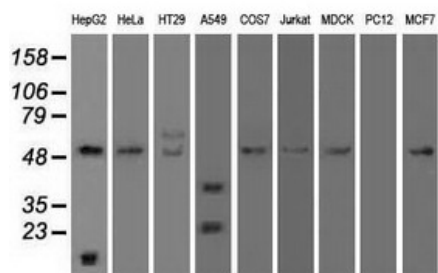
Background Information

The protein encoded by this gene is secreted and is a serine protease inhibitor whose targets include elastase, plasmin, thrombin, trypsin, chymotrypsin, and plasminogen activator. Defects in this gene can cause emphysema or liver disease. Several transcript variants encoding the same protein have been found for this gene.

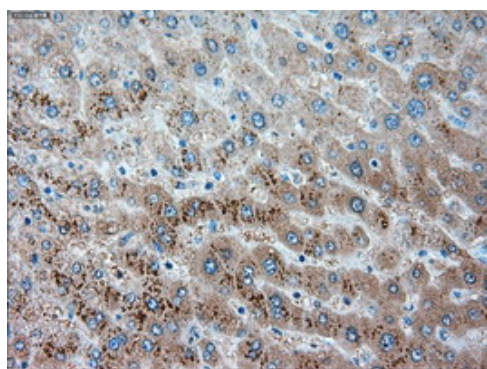
Selected Validation Data

Anti-Alpha 1 Antitrypsin/SERPINA1 Antibody (Clone#OTI9A1)

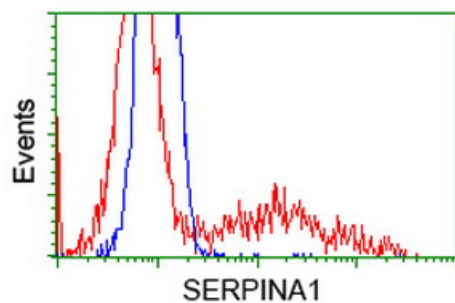
Catalog Number: **M00720-3**



Western blot analysis of extracts (35ug) from 9 different cell lines by using anti-SERPINA1 monoclonal antibody.



Immunohistochemical staining of paraffin-embedded Human liver tissue within the normal limits using anti-SERPINA1 mouse monoclonal antibody. (Heat-induced epitope retrieval by 10mM citric buffer, pH6.0, 100°C for 10min, M00720-3)



HEK293T cells transfected with either overexpress plasmid (Red) or empty vector control plasmid (Blue) were immunostained by anti-SERPINA1 antibody, and then analyzed by flow cytometry.