

## Basic Information

<b>Product Name</b>	Anti-ASL Antibody (Clone#OTI3D4)
<b>Gene Name</b>	ASL
<b>Source</b>	Mouse
<b>Clonality</b>	Monoclonal
<b>Isotype</b>	IgG2a
<b>Species Reactivity</b>	human, mouse, rat
<b>Tested Application</b>	IHC, WB
<b>Contents</b>	PBS (PH 7.3) containing 1% BSA, 50% glycerol and 0.02% sodium azide.
<b>Immunogen</b>	Full length human recombinant protein of human ASL (NP_001020114) produced in HEK293T cell.
<b>Concentration</b>	500 ug/ml
<b>Purification</b>	Purified from mouse ascites fluids or tissue culture supernatant by affinity chromatography (protein A/G)
<b>Observed MW</b>	52 kDa
<b>Dilution Ratios</b>	Western blot (WB): 1:2000 Immunohistochemistry (IHC):1:150

## Storage

Stable for 12 months from date of receipt. Store at -20°C as received.

## Background Information

This gene encodes a member of the lyase 1 family. The encoded protein forms a cytosolic homotetramer and primarily catalyzes the reversible hydrolytic cleavage of argininosuccinate into arginine and fumarate, an essential step in the liver in detoxifying ammonia via the urea cycle. Mutations in this gene result in the autosomal recessive disorder argininosuccinic aciduria, or argininosuccinic acid lyase deficiency. A nontranscribed pseudogene is also located on the long arm of chromosome 22. Alternatively spliced transcript variants encoding different isoforms have been described. [provided by RefSeq, Jul

Product datasheet

## Anti-ASL Antibody (Clone#OTI3D4)

Catalog Number: **M00742-1**

**BOSTER**<sup>®</sup>

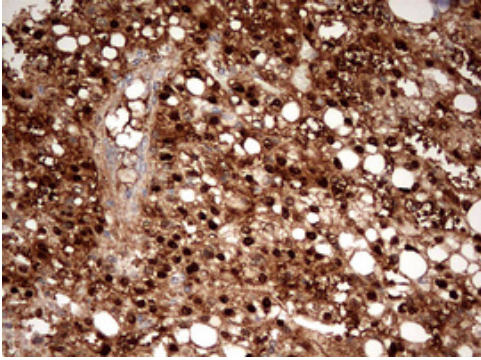
antibody and ELISA experts

**BOSTER BIOLOGICAL TECHNOLOGY**

Building C21, 3rd to 5th Floors, Optics Valley Biopharmaceutical Accelerator,  
East Lake High-Tech Development Zone, Wuhan.

**Web:** [www.boster.com](http://www.boster.com) **Phone:** 027-67845390/1/2 **Email:** [boster@boster.com](mailto:boster@boster.com)

## Selected Validation Data



Immunohistochemical staining of paraffin-embedded Carcinoma of Human liver tissue using anti-ASL mouse monoclonal antibody. (M00742-1) Dilution: 1:150

Western blot analysis of HT29 cell lysate (35ug) by using anti-ASL monoclonal antibody. Dilution: 1:500

