

Basic Information

Product Name	Anti-DISC1 Antibody (Clone#22D79)	
Gene Name	DISC1	
Source	Rabbit	
Clonality	Monoclonal	
Isotype	IgG	
Species Reactivity	human, mouse, rat	
Tested Application	WB, IHC, ICC/IF, IP, FCM	
Contents	500 ug/ml; Rabbit IgG in phosphate buffered saline, pH 7.4, 150mM NaCl, 0.02% sodium azide, 0.4-0.5 mg/ml BSA and 50% glycerol.	
Immunogen	A synthesized peptide derived from human DISC1	
Concentration	500 ug/ml	
Purification	Affinity-chromatography	
Observed MW	100 kDa	
Dilution Ratios	Western blot (WB):	1:500-2000
	Immunohistochemistry (IHC):	1:50-200
	Immunocytochemistry/Immunofluorescence (ICC/IF):	1:50-200
	ImmunoPrecipitation (IP):	1:50
	Flow Cytometry (FCM):	1:50

Storage

12 months from date of receipt, -20°C as supplied.

Selected Validation Data

Product datasheet

Anti-DISC1 Antibody (Clone#22D79)

Catalog Number: M00750

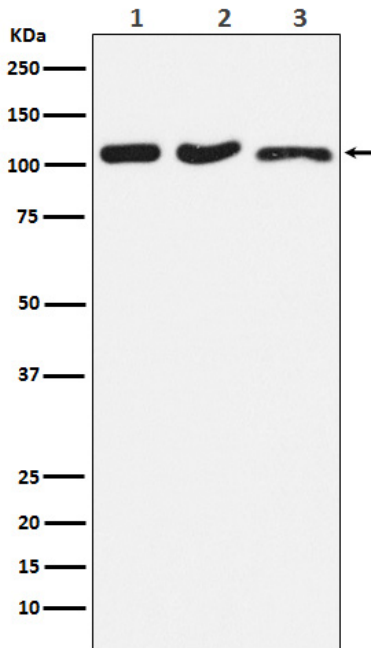


antibody and ELISA experts

BOSTER BIOLOGICAL TECHNOLOGY

Building C21, 3rd to 5th Floors, Optics Valley Biopharmaceutical Accelerator,
East Lake High-Tech Development Zone, Wuhan.

Web: www.boster.com **Phone:** 027-67845390/1/2 **Email:** boster@boster.com



Western blot analysis of DISC1 expression in (1) HeLa cell lysate; (2) RAW264.7 cell lysate; (3) PC-12 cell lysate.