

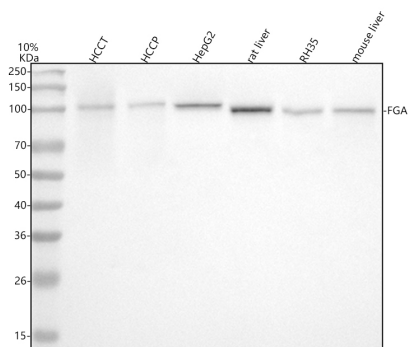
Basic Information

Product Name	Anti-Fibrinogen Alpha Chain/FGA Antibody (Clone#23F47)	
Gene Name	FGA	
Source	Rabbit	
Clonality	Monoclonal	
Isotype	IgG	
Species Reactivity	human, mouse, rat	
Tested Application	WB, IHC, ICC/IF, IP, FCM	
Contents	500 ug/ml; Rabbit IgG in phosphate buffered saline, pH 7.4, 150mM NaCl, 0.02% sodium azide, 0.4-0.5 mg/ml BSA and 50% glycerol.	
Immunogen	A synthesized peptide derived from human Fibrinogen alpha chain	
Concentration	500 ug/ml	
Purification	Affinity-chromatography	
Observed MW	95 kDa	
Dilution Ratios	Western blot (WB):	1:500-2000
	Immunohistochemistry (IHC):	1:50-200
	Immunocytochemistry/Immunofluorescence (ICC/IF):	1:50-200
	ImmunoPrecipitation (IP):	1:50
	Flow Cytometry (FCM):	1:50

Storage

12 months from date of receipt, -20°C as supplied. 6 months 2 to 8°C after reconstitution. Avoid repeated freezing and thawing.

Selected Validation Data



Western blot analysis of anti-Fibrinogen Alpha Chain/FGA antibody (M00816-1). The sample well of each lane was loaded with 30 ug of sample under reducing conditions.

Lane 1: human hepatocellular carcinoma tumor tissue (HCCT) lysates,

Lane 2: human hepatocellular carcinoma paracancerous tissue (HCCP) lysates,

Lane 3: human HepG2 whole cell lysates,

Lane 4: rat liver tissue lysates,

Lane 5: rat RH-35 whole cell lysates,

Lane 6: mouse liver tissue lysates.

After electrophoresis, proteins were transferred to a membrane. Then the membrane was incubated with rabbit anti-Fibrinogen Alpha Chain/FGA antigen affinity purified monoclonal antibody (M00816-1) at a dilution of 1:1000 and probed with a goat anti-rabbit IgG-HRP secondary antibody (Catalog # BA1054). The signal is developed using ECL Plus Western Blotting Substrate (Catalog # AR1197). A specific band was detected for Fibrinogen Alpha Chain/FGA at approximately 95 kDa. The expected band size for Fibrinogen Alpha Chain/FGA is at 95 kDa.