

Basic Information

Product Name	Anti-DLD Antibody (Clone#OTI6D5)		
Gene Name	DLD		
Source	Mouse		
Clonality	Monoclonal		
Isotype	IgG1		
Species Reactivity	human, mouse, rat		
Tested Application	WB, IHC, ICC/IF, FCM		
Contents	PBS (PH 7.3) containing 1% BSA, 50% glycerol and 0.02% sodium azide.		
Immunogen	Full length human recombinant protein of human DLD(NP_000099) produced in HEK293T cell.		
Concentration	500 ug/ml		
Purification	Purified from mouse ascites fluids or tissue culture supernatant by affinity chromatography (protein A/G)		
Observed MW	50.1 kDa		
Dilution Ratios	Western blot (WB):	1:2000	
	Immunohistochemistry (IHC):	1:150	
	Immunocytochemistry/Immunofluorescence (ICC/IF):	1:100	
	Flow cytometry (FCM):	1:100	

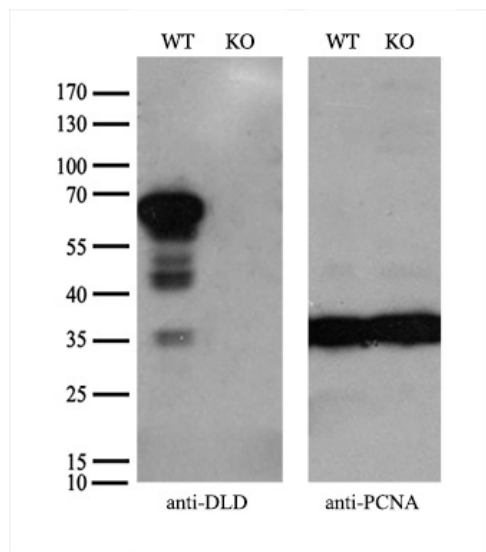
Storage

Stable for 12 months from date of receipt. Store at -20°C as received.

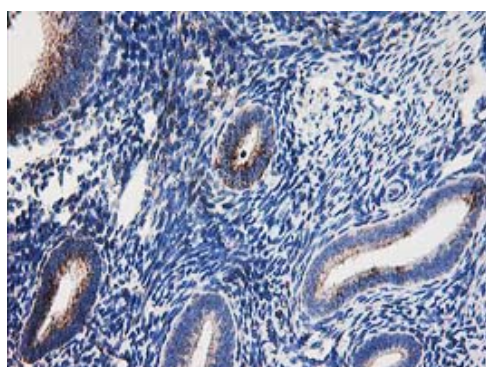
Background Information

This gene encodes the L protein of the mitochondrial glycine cleavage system. The L protein, also named dihydrolipoamide dehydrogenase, is also a component of the pyruvate dehydrogenase complex, the alpha-ketoglutarate dehydrogenase complex, and the branched-chain alpha-keto acid dehydrogenase complex. Mutations in this gene have been identified in patients with E3-deficient maple syrup urine disease and lipoamide dehydrogenase deficiency. [provided by RefSeq]

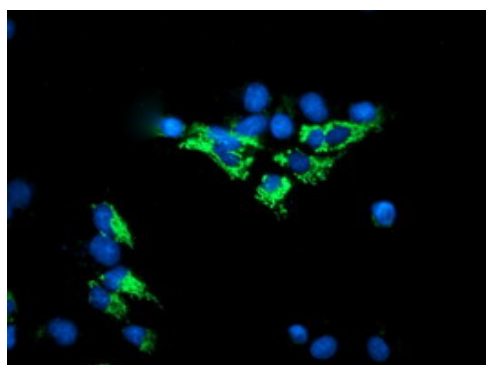
Selected Validation Data



Equivalent amounts of cell lysates (10 ug per lane) of wild-type HeLa cells (WT) and DLD-Knockout HeLa cells (KO) were separated by SDS-PAGE and immunoblotted with anti-DLD monoclonal antibody M00870 (1:500). Then the blotted membrane was stripped and reprobed with anti-PCNA antibody as a loading control.



Immunohistochemical staining of paraffin-embedded Human endometrium tissue within the normal limits using anti-DLD mouse monoclonal antibody. (Heat-induced epitope retrieval by 10mM citric buffer, pH6.0, 100°C for 10min, M00870)



Anti-DLD mouse monoclonal antibody immunofluorescent staining of COS7 cells transiently transfected by pCMV6-ENTRY DLD .

Product datasheet

Anti-DLD Antibody (Clone#OTI6D5)

Catalog Number: M00870

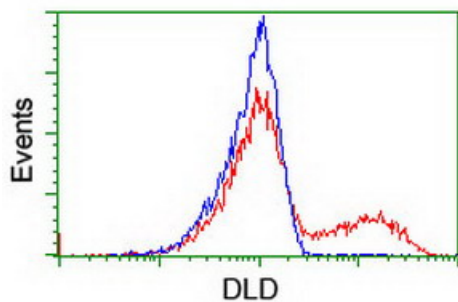


antibody and ELISA experts

BOSTER BIOLOGICAL TECHNOLOGY

Building C21, 3rd to 5th Floors, Optics Valley Biopharmaceutical Accelerator,
East Lake High-Tech Development Zone, Wuhan.

Web: www.boster.com **Phone:** 027-67845390/1/2 **Email:** boster@boster.com



HEK293T cells transfected with either overexpress plasmid (Red) or empty vector control plasmid (Blue) were immunostained by anti-DLD antibody, and then analyzed by flow cytometry.