

Basic Information

Product Name	Anti-CYP2A6 Antibody (Clone#OTI5F8)	
Gene Name	CYP2A6	
Source	Mouse	
Clonality	Monoclonal	
Isotype	IgG2b	
Species Reactivity	human, mouse, rat	
Tested Application	WB, IHC, ICC/IF, FCM	
Contents	PBS (PH 7.3) containing 1% BSA, 50% glycerol and 0.02% sodium azide.	
Immunogen	Full length human recombinant protein of human CYP2A6(NP_000753) produced in HEK293T cell.	
Concentration	500 ug/ml	
Purification	Purified from mouse ascites fluids or tissue culture supernatant by affinity chromatography (protein A/G)	
Observed MW	56.3 kDa	
Dilution Ratios	Western blot (WB):	1:2000
	Immunohistochemistry (IHC):	1:150
	Immunocytochemistry/Immunofluorescence (ICC/IF):	1:100
	Flow cytometry (FCM):	1:100

Storage

Stable for 12 months from date of receipt. Store at -20°C as received.

Background Information

This gene, CYP2A6, encodes a member of the cytochrome P450 superfamily of enzymes. The cytochrome P450 proteins are monooxygenases which catalyze many reactions involved in drug metabolism and synthesis of cholesterol, steroids and other lipids. This protein localizes to the endoplasmic reticulum and its expression is induced by phenobarbital. The enzyme is known to hydroxylate coumarin, and also metabolizes nicotine, aflatoxin B1, nitrosamines, and some pharmaceuticals. Individuals with certain allelic variants are said to have a poor metabolizer phenotype, meaning they do not efficiently metabolize coumarin or nicotine. This gene is part of a large cluster of cytochrome P450 genes from the CYP2A, CYP2B and CYP2F subfamilies on chromosome 19q. The gene was formerly referred to as CYP2A3; however,

Product datasheet

Anti-CYP2A6 Antibody (Clone#OTI5F8)

Catalog Number: **M00947-2**

BOSTER[®]

antibody and ELISA experts

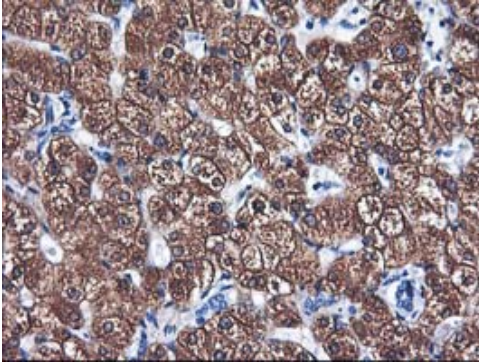
BOSTER BIOLOGICAL TECHNOLOGY

Building C21, 3rd to 5th Floors, Optics Valley Biopharmaceutical Accelerator,
East Lake High-Tech Development Zone, Wuhan.

Web: www.boster.com **Phone:** 027-67845390/1/2 **Email:** boster@boster.com

it has been renamed CYP2A6. [provided by RefSeq, Jul 2008]

Selected Validation Data



Immunohistochemical staining of paraffin-embedded Human liver tissue within the normal limits using anti-CYP2A6 mouse monoclonal antibody. (Heat-induced epitope retrieval by 10mM citric buffer, pH6.0, 100°C for 10min, M00947-2)