

Basic Information

Product Name	Anti-PI3 Kinase p110 Beta/PIK3CB Antibody (Clone#30P53)	
Gene Name	PIK3CB	
Source	Rabbit	
Clonality	Monoclonal	
Isotype	IgG	
Species Reactivity	human, mouse, rat	
Tested Application	WB, IHC, ICC/IF	
Contents	500 ug/ml; Rabbit IgG in phosphate buffered saline, pH 7.4, 150mM NaCl, 0.02% sodium azide, 0.4-0.5 mg/ml BSA and 50% glycerol.	
Immunogen	A synthesized peptide derived from human PI3 Kinase p110 beta	
Concentration	500 ug/ml	
Purification	Affinity-chromatography	
Observed MW	110 kDa	
Dilution Ratios	Western blot (WB):	1:500-2000
	Immunohistochemistry (IHC):	1:50-200
	Immunocytochemistry/Immunofluorescence (ICC/IF):	1:50-200

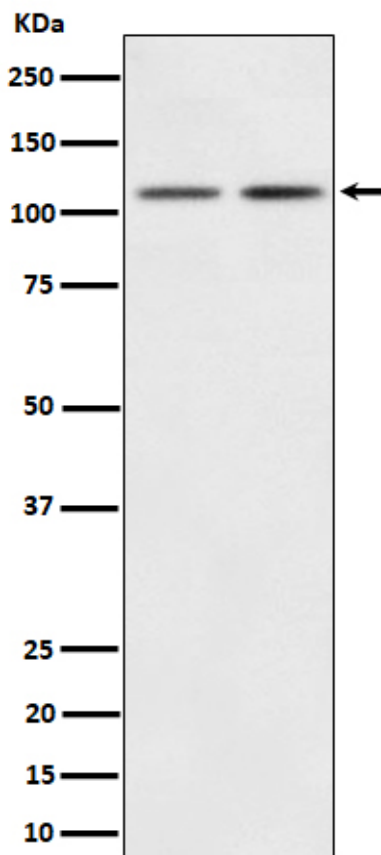
Storage

12 months from date of receipt, -20°C as supplied.

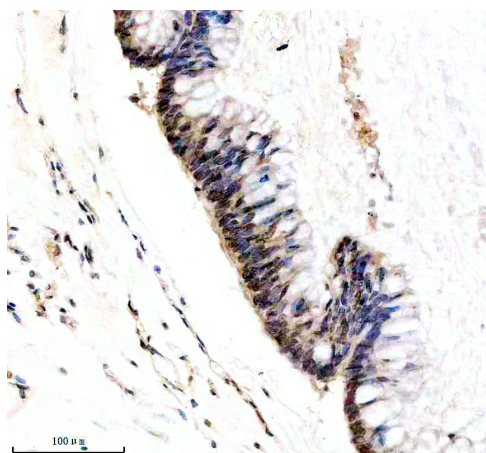
Reference

Anti-PI3 Kinase p110 Beta/PIK3CB Antibody (Clone#30P53)被引用在5文献中。

Selected Validation Data



Western blot analysis of PI3 Kinase p110 beta expression in (1) 293 cell lysate; (2) Mouse Brain lysate.



IHC analysis of PI3 Kinase p110 Beta/PIK3CB using anti-PI3 Kinase p110 Beta/PIK3CB antibody (M01091-1).

PI3 Kinase p110 Beta/PIK3CB was detected in a paraffin-embedded section of human colon tissue. The tissue section was incubated with rabbit anti-PI3 Kinase p110 Beta/PIK3CB Antibody (M01091-1) at a dilution of 1:200 and developed using HRP Conjugated Rabbit IgG Super Vision Assay Kit (Catalog # SV0002) with DAB (Catalog # AR1027) as the chromogen.