

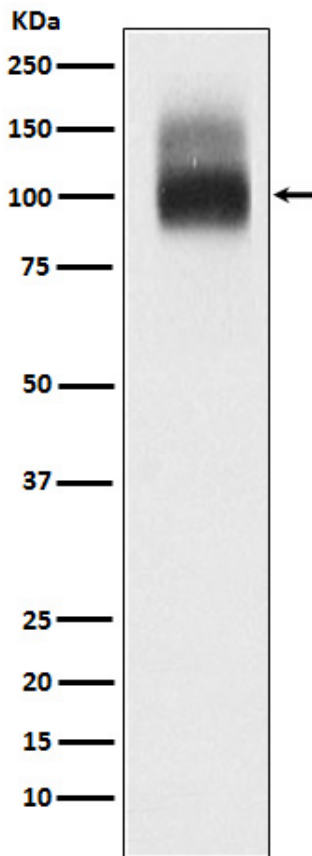
Basic Information

Product Name	Anti-Band 3/AE1/SLC4A1 Antibody (Clone#18S93)		
Gene Name	SLC4A1		
Source	Rabbit		
Clonality	Monoclonal		
Isotype	IgG		
Species Reactivity	human		
Tested Application	WB, IHC, ICC/IF		
Contents	500 ug/ml; Rabbit IgG in phosphate buffered saline, pH 7.4, 150mM NaCl, 0.02% sodium azide, 0.4-0.5 mg/ml BSA and 50% glycerol.		
Immunogen	A synthesized peptide derived from human Band 3 / CD233		
Concentration	500 ug/ml		
Purification	Affinity-chromatography		
Observed MW	102 kDa		
Dilution Ratios	Western blot (WB):	1:500-2000	
	Immunohistochemistry (IHC):	1:50-200	
	Immunocytochemistry/Immunofluorescence (ICC/IF):	1:50-200	

Storage

12 months from date of receipt, -20°C as supplied.

Selected Validation Data



Western blot analysis of Band 3 / CD233 expression in Red blood cell lysate.