

Basic Information

Product Name	Anti-ZEB2 Antibody (Clone#OTI15G8)
Gene Name	ZEB2
Source	Mouse
Clonality	Monoclonal
Isotype	IgG1
Species Reactivity	human, mouse, rat
Tested Application	WB, IHC
Contents	PBS (PH 7.3) containing 1% BSA, 50% glycerol and 0.02% sodium azide.
Immunogen	Human recombinant protein fragment corresponding to amino acids 1-350 of human ZEB2 (NP_055610) produced in E.coli.
Concentration	500 ug/ml
Purification	Purified from mouse ascites fluids or tissue culture supernatant by affinity chromatography (protein A/G)
Dilution Ratios	Western blot (WB): 1:2000 Immunohistochemistry (IHC):1:150

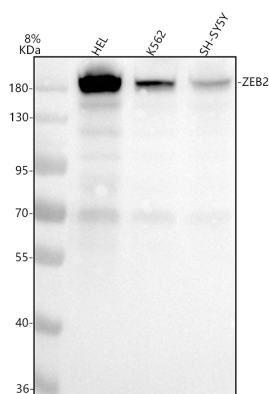
Storage

Stable for 12 months from date of receipt. Store at -20°C as received.

Background Information

The protein encoded by this gene is a member of the Zfh1 family of 2-handed zinc finger/homeodomain proteins. It is located in the nucleus and functions as a DNA-binding transcriptional repressor that interacts with activated SMADs. Mutations in this gene are associated with Hirschsprung disease/Mowat-Wilson syndrome. Alternatively spliced transcript variants have been found for this gene. [provided by RefSeq, Jan 2010]

Selected Validation Data



Western blot analysis of anti-ZEB2 antibody (M01169-1). The sample well of each lane was loaded with 30 ug of sample under reducing conditions.

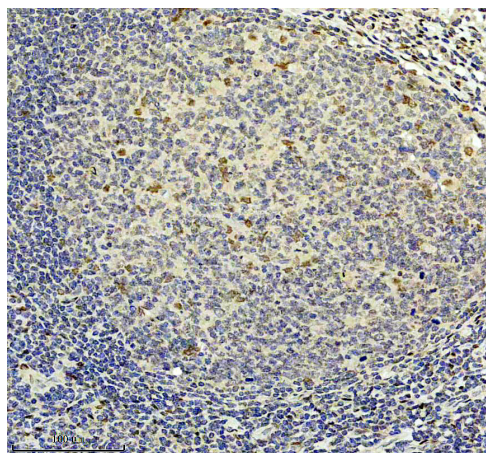
Lane 1: human HEL whole cell lysates,

Lane 2: human K562 whole cell lysates,

Lane 3: human SH-SY5Y whole cell lysates.

After electrophoresis, proteins were transferred to a membrane.

Then the membrane was incubated with mouse anti-ZEB2 antigen affinity purified monoclonal antibody (M01169-1) at a dilution of 1:1000 and probed with a goat anti-mouse IgG-HRP secondary antibody (Catalog # BA1050). The signal is developed using ECL Plus Western Blotting Substrate (Catalog # AR1197). A specific band was detected for ZEB2 at approximately 180 kDa. The expected band size for ZEB2 is at 136 kDa.



IHC analysis of ZEB2 using anti-ZEB2 antibody (M01169-1).

ZEB2 was detected in a paraffin-embedded section of human tonsil tissue. The tissue section was incubated with mouse anti-ZEB2 Antibody (M01169-1) at a dilution of 1:200 and developed using HRP Conjugated Mouse IgG Super Vision Assay Kit (Catalog # SV0001) with DAB (Catalog # AR1027) as the chromogen.