

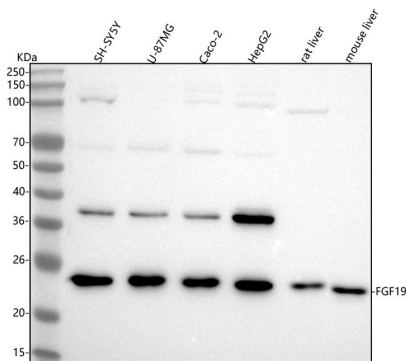
Basic Information

Product Name	Anti-FGF19 Antibody (Clone#24F22)
Gene Name	FGF19
Source	Rabbit
Clonality	Monoclonal
Isotype	IgG
Species Reactivity	human, mouse, rat
Tested Application	WB
Contents	500 ug/ml; Rabbit IgG in phosphate buffered saline, pH 7.4, 150mM NaCl, 0.02% sodium azide, 0.4-0.5 mg/ml BSA and 50% glycerol.
Immunogen	A synthesized peptide derived from human FGF19
Concentration	500 ug/ml
Purification	Affinity-chromatography
Observed MW	24 kDa
Dilution Ratios	Western blot (WB):1:500-2000

Storage

12 months from date of receipt, -20°C as supplied.

Selected Validation Data



Western blot analysis of anti-FGF19 antibody (M01191). The sample well of each lane was loaded with 30 ug of sample under reducing conditions.

Lane 1: human SH-SY5Y whole cell lysates,

Lane 2: human U-87 MG whole cell lysates,

Lane 3: human Caco-2 whole cell lysates,

Lane 4: human HepG2 whole cell lysates,

Lane 5: rat liver tissue lysates,

Lane 6: mouse liver tissue lysates.

After electrophoresis, proteins were transferred to a membrane. Then the membrane was incubated with rabbit anti-FGF19 antigen affinity purified monoclonal antibody (M01191) at a dilution of 1:1000 and probed with a goat anti-rabbit IgG-HRP secondary antibody (Catalog # BA1054). The signal is developed using ECL Plus Western Blotting Substrate (Catalog # AR1197). A specific band was detected for FGF19 at approximately 24 kDa. The expected band size for FGF19 is at 24 kDa.