

Basic Information

| | |
|---------------------------|---|
| Product Name | Anti-VCAM1 Antibody (Clone#OTI4E8) |
| Gene Name | VCAM1 |
| Source | Mouse |
| Clonality | Monoclonal |
| Isotype | IgG1 |
| Species Reactivity | human |
| Tested Application | IHC, WB |
| Contents | PBS (PH 7.3) containing 1% BSA, 50% glycerol and 0.02% sodium azide. |
| Immunogen | Full length human recombinant protein of human VCAM1(NP_001069) produced in HEK293T cell. |
| Concentration | 500 ug/ml |
| Purification | Purified from mouse ascites fluids or tissue culture supernatant by affinity chromatography (protein A/G) |
| Observed MW | 78.7 kDa |
| Dilution Ratios | Western blot (WB): 1:500~2000 Immunohistochemistry (IHC):1:150 |

Storage

Stable for 12 months from date of receipt. Store at -20°C as received.

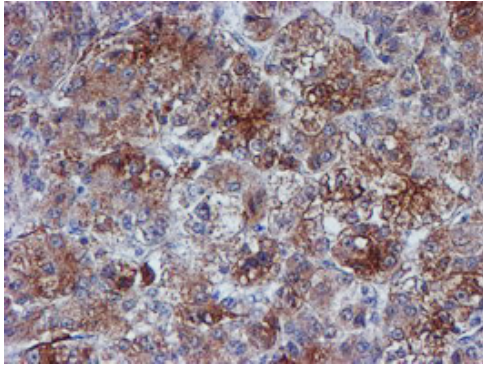
Background Information

This gene is a member of the Ig superfamily and encodes a cell surface sialoglycoprotein expressed by cytokine-activated endothelium. This type I membrane protein mediates leukocyte-endothelial cell adhesion and signal transduction, and may play a role in the development of atherosclerosis and rheumatoid arthritis. Three alternatively spliced transcripts encoding different isoforms have been described for this gene. [provided by RefSeq]

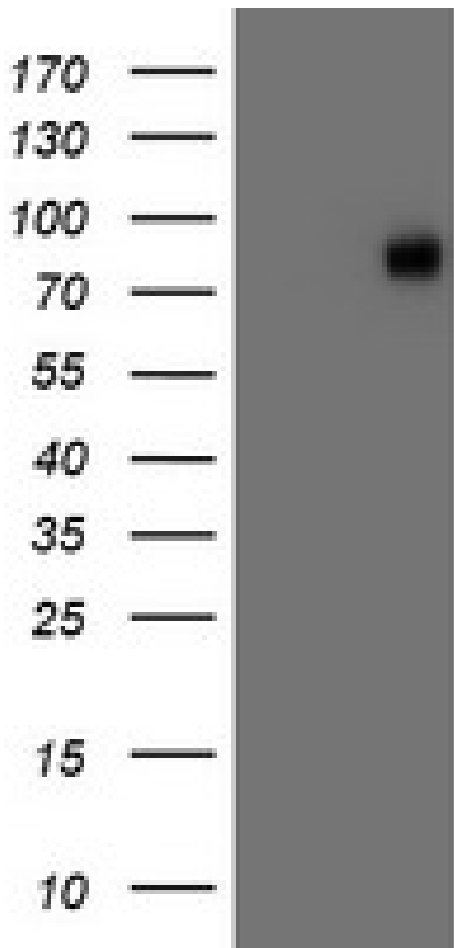
Selected Validation Data

Anti-VCAM1 Antibody (Clone#OTI4E8)

Catalog Number: **M01199-2**



Immunohistochemical staining of paraffin-embedded Carcinoma of Human liver tissue using anti-VCAM1 mouse monoclonal antibody. (Heat-induced epitope retrieval by 10mM citric buffer, pH6.0, 100°C for 10min, M01199-2)



HEK293T cells were transfected with the pCMV6-ENTRY control (Left lane) or pCMV6-ENTRY VCAM1 (Right lane) cDNA for 48 hrs and lysed. Equivalent amounts of cell lysates (5 ug per lane) were separated by SDS-PAGE and immunoblotted with anti-VCAM1.