

Basic Information

Product Name	Anti-MAP2 Antibody (Clone#OTI5D1)
Gene Name	MAP2
Source	Mouse
Clonality	Monoclonal
Isotype	IgG1
Species Reactivity	human, mouse
Tested Application	WB
Contents	PBS (PH 7.3) containing 1% BSA, 50% glycerol and 0.02% sodium azide.
Immunogen	Human recombinant protein fragment corresponding to amino acids 1507-1827 of human MAP2 (NP_002365) produced in E.coli.
Concentration	500 ug/ml
Purification	Purified from mouse ascites fluids or tissue culture supernatant by affinity chromatography (protein A/G)
Observed MW	199.3 kDa
Dilution Ratios	Western blot (WB):1:1000

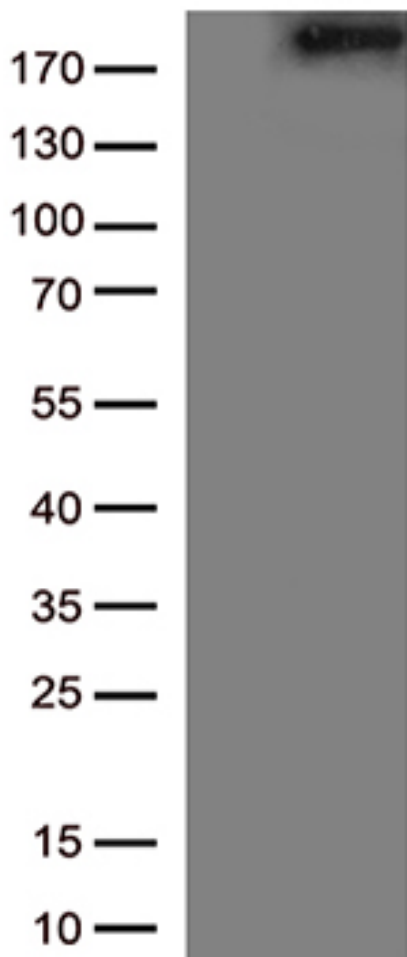
Storage

Shipped at -20°C or with ice packs, Upon delivery store at -20°C. Dilute in PBS(pH7.3) if necessary. Stable for 12 months from date of receipt. Avoid repeated freeze-thaws.

Background Information

This gene encodes a protein that belongs to the microtubule-associated protein family. The proteins of this family are thought to be involved in microtubule assembly, which is an essential step in neurogenesis. The products of similar genes in rat and mouse are neuron-specific cytoskeletal proteins that are enriched in dendrites, implicating a role in determining and stabilizing dendritic shape during neuron development. A number of alternatively spliced variants encoding distinct isoforms have been described. [provided by RefSeq, Jan 2010].

Selected Validation Data



HEK293T cells were transfected with the pCMV6-ENTRY control (Left lane) or pCMV6-ENTRY MAP2 (Right lane) cDNA for 48 hrs and lysed. Equivalent amounts of cell lysates (5 ug per lane) were separated by SDS-PAGE and immunoblotted with anti-MAP2.(1:1000)