

## Basic Information

<b>Product Name</b>	Anti-CD16/FCGR3A Antibody (Clone#OTI2A2)		
<b>Gene Name</b>	FCGR3A		
<b>Source</b>	Mouse		
<b>Clonality</b>	Monoclonal		
<b>Isotype</b>	IgG1		
<b>Species Reactivity</b>	human		
<b>Tested Application</b>	WB, IHC, FCM		
<b>Contents</b>	PBS (PH 7.3) containing 1% BSA, 50% glycerol and 0.02% sodium azide.		
<b>Immunogen</b>	Full length human recombinant protein of human FCGR3A (NP_001121065) produced in HEK293T cell.		
<b>Concentration</b>	500 ug/ml		
<b>Purification</b>	Purified from mouse ascites fluids or tissue culture supernatant by affinity chromatography (protein A/G)		
<b>Observed MW</b>	29.09 kDa		
<b>Dilution Ratios</b>	Western blot (WB): 1:1000 Immunohistochemistry (IHC):1:50-400 Flow cytometry (FCM): 1:100		

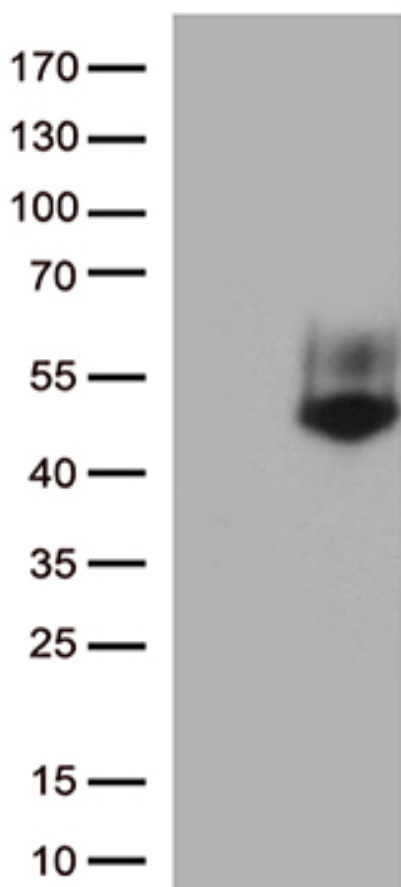
## Storage

Shipped at -20°C or with ice packs, Upon delivery store at -20°C. Dilute in PBS(pH7.3) if necessary. Stable for 12 months from date of receipt. Avoid repeated freeze-thaws.

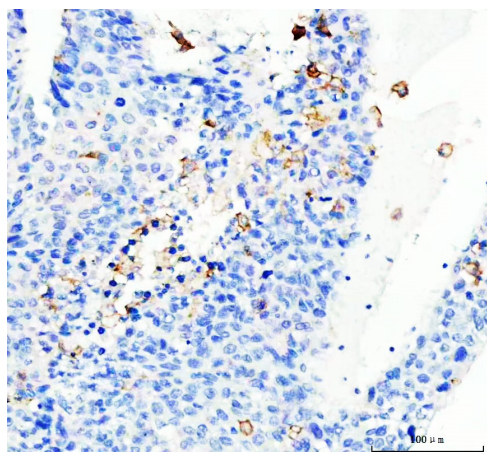
## Background Information

This gene encodes a receptor for the Fc portion of immunoglobulin G, and it is involved in the removal of antigen-antibody complexes from the circulation, as well as other other antibody-dependent responses. This gene (FCGR3A) is highly similar to another nearby gene (FCGR3B) located on chromosome 1. The receptor encoded by this gene is expressed on natural killer (NK) cells as an integral membrane glycoprotein anchored through a transmembrane peptide, whereas FCGR3B is expressed on polymorphonuclear neutrophils (PMN) where the receptor is anchored through a phosphatidylinositol (PI) linkage. Mutations in this gene have been linked to susceptibility to recurrent viral infections, susceptibility to systemic lupus erythematosus, and alloimmune neonatal neutropenia. Alternatively spliced transcript variants encoding different isoforms have been found for this gene. [provided by RefSeq, Jul 2008].

## Selected Validation Data



HEK293T cells were transfected with the pCMV6-ENTRY control (Left lane) or pCMV6-ENTRY FCGR3A (Right lane) cDNA for 48 hrs and lysed. Equivalent amounts of cell lysates (5 ug per lane) were separated by SDS-PAGE and immunoblotted with anti-FCGR3A.(1:1000)

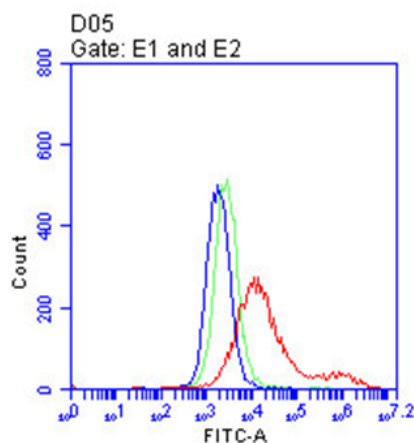


IHC analysis of CD16/FCGR3A using anti-CD16/FCGR3A antibody (M01408-2).

CD16/FCGR3A was detected in a paraffin-embedded section of human liver cancer tissue. The tissue section was incubated with mouse anti-CD16/FCGR3A Antibody (M01408-2) at a dilution of 1:200 and developed using HRP Conjugated mouse IgG Super Vision Assay Kit (Catalog # SV0001) with DAB (Catalog # AR1027) as the chromogen.

# Anti-CD16/FCGR3A Antibody (Clone#OTI2A2)

**Catalog Number: M01408-2**



Flow cytometric analysis of living 293T cells transfected with FCGR3A overexpression plasmid (Red)/empty vector (Blue) using anti-FCGR3A antibody. Cells incubated with a non-specific antibody (Green) were used as isotype control. (1: 100)