

Basic Information

| | | | |
|---------------------------|---|--|--|
| Product Name | Anti-Cytokeratin 8/KRT8 Antibody (Clone#OTI1B9) | | |
| Gene Name | KRT8 | | |
| Source | Mouse | | |
| Clonality | Monoclonal | | |
| Isotype | IgG2a | | |
| Species Reactivity | human, mouse, rat, dog, monkey | | |
| Tested Application | WB, ICC/IF | | |
| Contents | PBS (pH 7.3) containing 1% BSA, 50% glycerol and 0.02% sodium azide. | | |
| Immunogen | Human recombinant protein fragment corresponding to amino acids 91-381 of human CK8 (NP_002264) produced in E.coli. | | |
| Concentration | 500 ug/ml | | |
| Purification | Purified from mouse ascites fluids or tissue culture supernatant by affinity chromatography (protein A/G) | | |
| Observed MW | 50 kDa | | |
| Dilution Ratios | Western blot (WB): 1:2500~5000 Immunocytochemistry/Immunofluorescence (ICC/IF):1:100 | | |

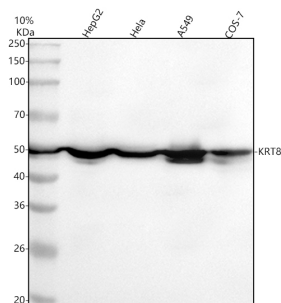
Storage

Stable for 12 months from date of receipt. Store at -20°C as received.

Background Information

Keratin 8 is a member of the type II keratin family clustered on the long arm of chromosome 12. Type I and type II keratins heteropolymerize to form intermediate-sized filaments in the cytoplasm of epithelial cells. The product of this gene typically dimerizes with keratin 18 to form an intermediate filament in simple single-layered epithelial cells. This protein plays a role in maintaining cellular structural integrity and also functions in signal transduction and cellular differentiation. Mutations in this gene cause cryptogenic cirrhosis.

Selected Validation Data



Western blot analysis of anti-Cytokeratin 8/KRT8 antibody

(M01421-5). The sample well of each lane was loaded with 30 ug of sample under reducing conditions.

Lane 1: human HepG2 whole cell lysates,

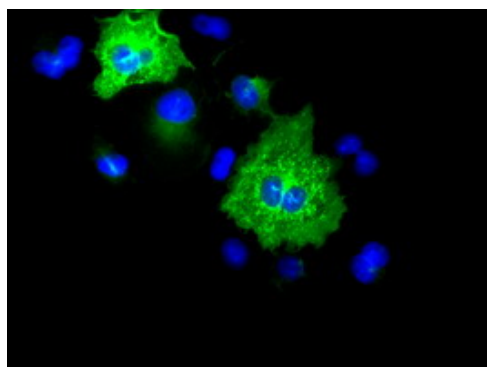
Lane 2: human Hela whole cell lysates,

Lane 3: human A549 whole cell lysates,

Lane 4: monkey COS-7 whole cell lysates.

After electrophoresis, proteins were transferred to a membrane.

Then the membrane was incubated with mouse anti-Cytokeratin 8/KRT8 antigen affinity purified monoclonal antibody (M01421-5) at a dilution of 1:1000 and probed with a goat anti-mouse IgG-HRP secondary antibody (Catalog # BA1050). The signal is developed using ECL Plus Western Blotting Substrate (Catalog # AR1197). A specific band was detected for Cytokeratin 8/KRT8 at approximately 50 kDa. The expected band size for Cytokeratin 8/KRT8 is at 54 kDa.



Anti-KRT8 mouse monoclonal antibody immunofluorescent staining of COS7 cells transiently transfected by pCMV6-ENTRY KRT8 .