

Basic Information

Product Name	Anti-BubR1/BUB1B Antibody (Clone#OTI5D9)	
Gene Name	BUB1B	
Source	Mouse	
Clonality	Monoclonal	
Isotype	IgG1	
Species Reactivity	human	
Tested Application	WB, IHC, ICC/IF	
Contents	PBS (pH 7.3) containing 1% BSA, 50% glycerol and 0.02% sodium azide.	
Immunogen	Full-length protein expressed in 293T cell transfected with human BUB1B expression vector	
Concentration	500 ug/ml	
Purification	Purified from mouse ascites fluids or tissue culture supernatant by affinity chromatography (protein A/G)	
Observed MW	119.5 kDa	
Dilution Ratios	Western blot (WB):	1:2000
	Immunohistochemistry (IHC):	1:50
	Immunocytochemistry/Immunofluorescence (ICC/IF):	1:100

Storage

Stable for 12 months from date of receipt. Store at -20°C as received.

Background Information

This gene encodes a kinase involved in spindle checkpoint function. The protein has been localized to the kinetochore and plays a role in the inhibition of the anaphase-promoting complex/cyclosome(APC/C), delaying the onset of anaphase and ensuring proper chromosome segregation. Impaired spindle checkpoint function has been found in many forms of cancer.

Selected Validation Data

Product datasheet

**Anti-BubR1/BUB1B Antibody
(Clone#OTI5D9)**

Catalog Number: M01564-4

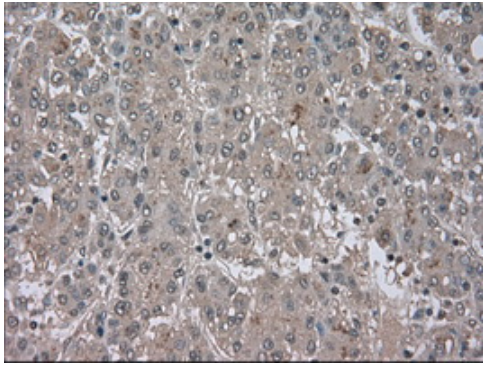
BOSTER[®]

antibody and ELISA experts

BOSTER BIOLOGICAL TECHNOLOGY

Building C21, 3rd to 5th Floors, Optics Valley Biopharmaceutical Accelerator,
East Lake High-Tech Development Zone, Wuhan.

Web: www.boster.com **Phone:** 027-67845390/1/2 **Email:** boster@boster.com



Immunohistochemical staining of paraffin-embedded Carcinoma of liver tissue using anti-BUB1B mouse monoclonal antibody. (Heat-induced epitope retrieval by 10mM citric buffer, pH6.0, 100°C for 10min, M01564-4, Dilution 1:50)