

Basic Information

Product Name	Anti-CIB1 Antibody (Clone#OTI1B8)
Gene Name	CIB1
Source	Mouse
Clonality	Monoclonal
Isotype	IgG2a
Species Reactivity	human, mouse, rat
Tested Application	IHC, WB
Contents	PBS (PH 7.3) containing 1% BSA, 50% glycerol and 0.02% sodium azide.
Immunogen	Human recombinant protein fragment corresponding to amino acids 2-191 of human CIB1 (NP_006375) produced in E.coli.
Concentration	500 ug/ml
Purification	Purified from mouse ascites fluids or tissue culture supernatant by affinity chromatography (protein A/G)
Observed MW	21.5 kDa
Dilution Ratios	Western blot (WB): 1:500~2000 Immunohistochemistry (IHC):1:500

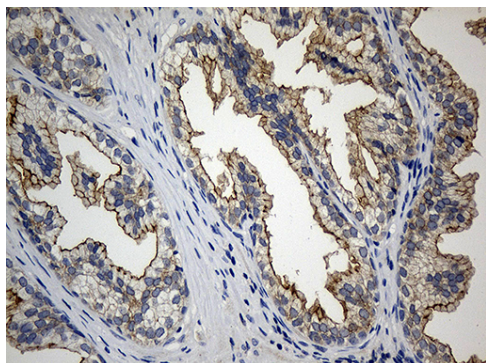
Storage

Stable for 12 months from date of receipt. Store at -20°C as received.

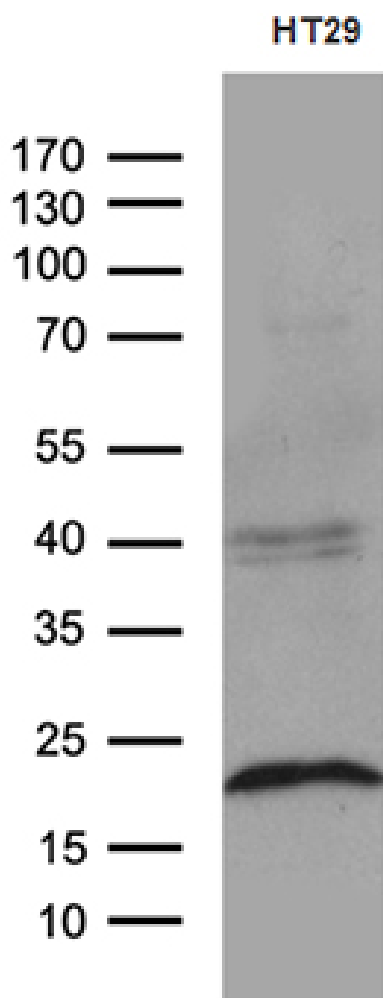
Background Information

Calcium and integrin-binding protein 1 is a protein that in humans is encoded by the CIB1 gene. This gene encodes a member of the EF-hand domain-containing calcium-binding superfamily. And this protein interacts with many other proteins, including the platelet integrin alpha-IIb-beta-3, DNA-dependent protein kinase, presenilin-2, focal adhesion kinase, p21 activated kinase, and protein kinase D. Moreover, the encoded protein may be involved in cell survival and proliferation, and is associated with several disease states including cancer and Alzheimer's disease. Alternative splicing results in multiple transcript variants.

Selected Validation Data



Immunohistochemical staining of paraffin-embedded Human prostate tissue within the normal limits using anti-CIB1 mouse monoclonal antibody. (Heat-induced epitope retrieval by 1mM EDTA in 10mM Tris buffer (pH8.5) at 120°C for 3min, M01797-1) (1:500)



Western blot analysis of extracts (35ug) from HT29 cell line by using anti-CIB1 monoclonal antibody (1:500).