

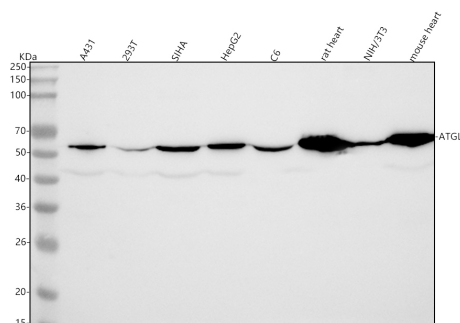
## Basic Information

<b>Product Name</b>	Anti-ATGL/PNPLA2 Antibody (Clone#23P38)
<b>Gene Name</b>	PNPLA2
<b>Source</b>	Rabbit
<b>Clonality</b>	Monoclonal
<b>Isotype</b>	IgG
<b>Species Reactivity</b>	human, mouse, rat
<b>Tested Application</b>	WB
<b>Contents</b>	500 ug/ml; Rabbit IgG in phosphate buffered saline, pH 7.4, 150mM NaCl, 0.02% sodium azide, 0.4-0.5 mg/ml BSA and 50% glycerol.
<b>Immunogen</b>	A synthesized peptide derived from human ATGL / PNPLA2
<b>Concentration</b>	500 ug/ml
<b>Purification</b>	Affinity-chromatography
<b>Observed MW</b>	55 kDa
<b>Dilution Ratios</b>	Western blot (WB):1:500-2000

## Storage

12 months from date of receipt, -20°C as supplied.

## Selected Validation Data



Western blot analysis of anti-ATGL/PNPLA2 antibody (M01800). The sample well of each lane was loaded with 30 ug of sample under reducing conditions.

Lane 1: human A431 whole cell lysates,

Lane 2: human 293T whole cell lysates,

Lane 3: human SiHa whole cell lysates,

Lane 4: human HepG2 whole cell lysates,

Lane 5: rat C6 whole cell lysates,

Lane 6: rat heart tissue lysates,

Lane 7: mouse NIH/3T3 whole cell lysates,

Lane 8: mouse heart tissue lysates.

After electrophoresis, proteins were transferred to a membrane. Then the membrane was incubated with rabbit anti-ATGL/PNPLA2 antigen affinity purified monoclonal antibody (M01800) at a dilution of 1:1000 and probed with a goat anti-rabbit IgG-HRP secondary antibody (Catalog # BA1054). The signal is developed using ECL Plus Western Blotting Substrate (Catalog # AR1197). A specific band was detected for ATGL/PNPLA2 at approximately 55 kDa. The expected band size for ATGL/PNPLA2 is at 55 kDa.