

Basic Information

| | |
|---------------------------|---|
| Product Name | Anti-Lysozyme/LYZ Antibody (Clone#OTI1C9) |
| Gene Name | LYZ |
| Source | Mouse |
| Clonality | Monoclonal |
| Isotype | IgG2b |
| Species Reactivity | human |
| Tested Application | WB, IHC |
| Contents | PBS (PH 7.3) containing 1% BSA, 50% glycerol and 0.02% sodium azide. |
| Immunogen | Full length human recombinant protein of human LYZ(NP_000230) produced in HEK293T cell. |
| Concentration | 500 ug/ml |
| Purification | Purified from mouse ascites fluids or tissue culture supernatant by affinity chromatography (protein A/G) |
| Observed MW | 14.7 kDa |
| Dilution Ratios | Western blot (WB): 1:4000 Immunohistochemistry (IHC):1:150 |

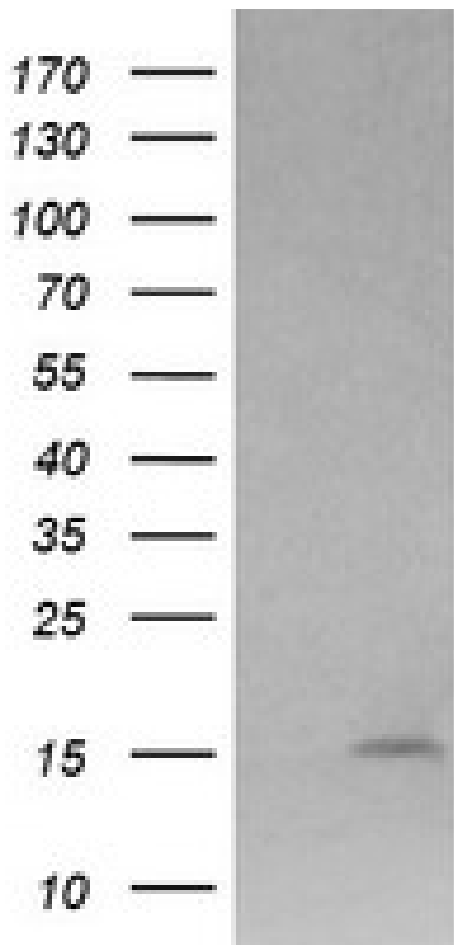
Storage

Stable for 12 months from date of receipt. Store at -20°C as received.

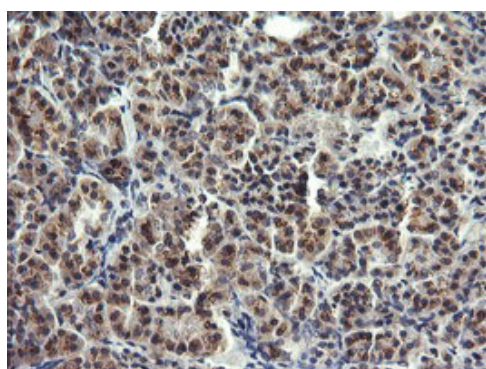
Background Information

This gene encodes human lysozyme, whose natural substrate is the bacterial cell wall peptidoglycan (cleaving the beta[1-4]glycosidic linkages between N-acetylmuramic acid and N-acetylglucosamine). Lysozyme is one of the anti-microbial agents found in human milk, and is also present in spleen, lung, kidney, white blood cells, plasma, saliva, and tears. Missense mutations in LYZ have been identified in heritable renal amyloidosis. [provided by RefSeq, Jul 2008]

Selected Validation Data



HEK293T cells were transfected with the pCMV6-ENTRY control (Left lane) or pCMV6-ENTRY LYZ (Right lane) cDNA for 48 hrs and lysed. Equivalent amounts of cell lysates (5 ug per lane) were separated by SDS-PAGE and immunoblotted with anti-LYZ(Cat# M01811-1).



Immunohistochemical staining of paraffin-embedded Human pancreas tissue within the normal limits using anti-LYZ mouse monoclonal antibody. (Heat-induced epitope retrieval by 10mM citric buffer, pH6.0, 120°C for 3min, M01811-1)