

Basic Information

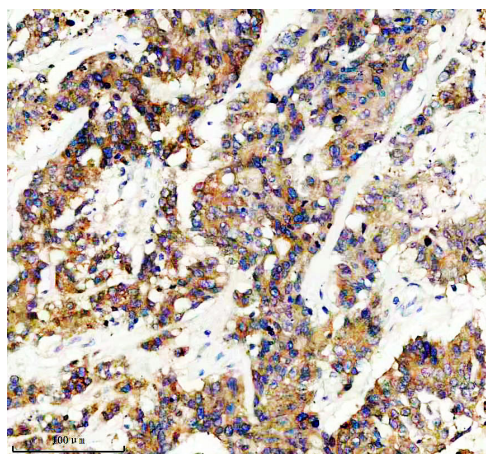
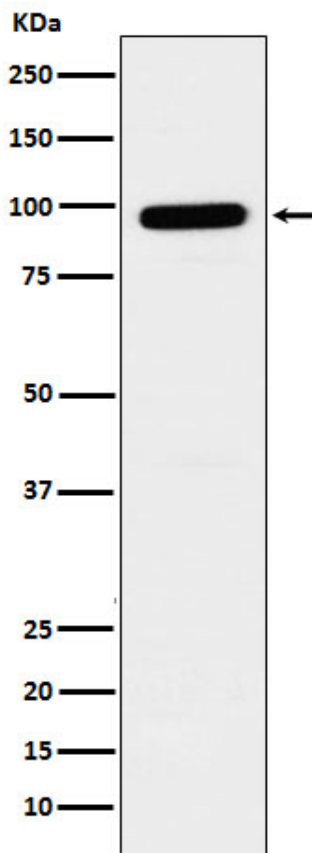
Product Name	Anti-Beta Galactosidase/GLB1 Antibody (Clone#25G11)
Gene Name	GLB1
Source	Rabbit
Clonality	Monoclonal
Isotype	IgG
Species Reactivity	human, mouse, rat
Tested Application	WB, IHC, FCM
Contents	500 ug/ml; Rabbit IgG in phosphate buffered saline, pH 7.4, 150mM NaCl, 0.02% sodium azide, 0.4-0.5 mg/ml BSA and 50% glycerol.
Immunogen	A synthesized peptide derived from human GLB1
Concentration	500 ug/ml
Purification	Affinity-chromatography
Observed MW	65-85 kDa
Dilution Ratios	Western blot (WB): 1:1000-5000 Immunohistochemistry (IHC):1:50-200 Flow Cytometry (FCM): 1:50

Storage

12 months from date of receipt, -20°C as supplied.

Selected Validation Data

Western blot analysis of GLB1 expression in SH-SY5Y cell lysate.



IHC analysis of GLB1 using anti-GLB1 antibody (M01829-3).

GLB1 was detected in a paraffin-embedded section of human colon cancer tissue. The tissue section was incubated with rabbit anti-GLB1 Antibody (M01829-3) at a dilution of 1:200 and developed using HRP Conjugated Rabbit IgG Super Vision Assay Kit (Catalog # SV0002) with DAB (Catalog # AR1027) as the chromogen.