

Basic Information

Product Name	Anti-CDCP1 Antibody (Clone#OTI2B8)		
Gene Name	CDCP1		
Source	Mouse		
Clonality	Monoclonal		
Isotype	IgG1		
Species Reactivity	human		
Tested Application	WB, IHC, FCM		
Contents	PBS (PH 7.3) containing 1% BSA, 50% glycerol and 0.02% sodium azide.		
Immunogen	Full length human recombinant protein of human CDCP1 (NP_073753) produced in HEK293T cell.		
Concentration	500 ug/ml		
Purification	Purified from mouse ascites fluids or tissue culture supernatant by affinity chromatography (protein A/G)		
Observed MW	92.8 kDa		
Dilution Ratios	Western blot (WB): 1:2000 Immunohistochemistry (IHC):1:150 Flow cytometry (FCM): 1:100		

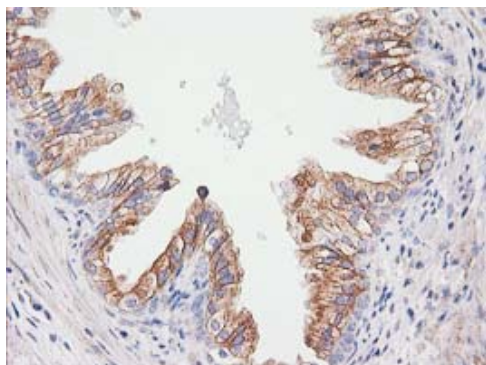
Storage

Stable for 12 months from date of receipt. Store at -20°C as received.

Background Information

The protein encoded by this gene is a transmembrane protein containing three extracellular CUB domains. This protein is found to be overexpressed in colon and lung cancers. Its expression level is correlated with the metastatic ability of carcinoma cells. This protein is located on the cell surface. It has been shown to be tyrosine phosphorylated in a cancer cell line. Alternatively spliced transcript variants encoding distinct isoforms have been reported. [provided by RefSeq, Jul 2008]

Selected Validation Data



Immunohistochemical staining of paraffin-embedded Human prostate tissue within the normal limits using anti-CDCP1 mouse monoclonal antibody. (Heat-induced epitope retrieval by 10mM citric buffer, pH6.0, 100°C for 10min, M02411-2)