

Basic Information

Product Name	Anti-Cytokeratin 20/KRT20 Antibody (Clone#OTI4A2)
Gene Name	KRT20
Source	Mouse
Clonality	Monoclonal
Isotype	IgG1
Species Reactivity	human
Tested Application	IHC, WB
Contents	PBS (PH 7.3) containing 1% BSA, 50% glycerol and 0.02% sodium azide.
Immunogen	Human recombinant protein fragment corresponding to amino acids 1-266 of human KRT20 (NP_061883) produced in E.coli.
Concentration	500 ug/ml
Purification	Purified from mouse ascites fluids or tissue culture supernatant by affinity chromatography (protein A/G)
Observed MW	48 kDa
Dilution Ratios	Western blot (WB): 1:2000 Immunohistochemistry (IHC):1:150

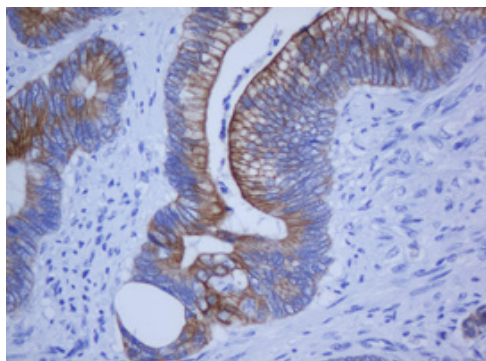
Storage

Stable for 12 months from date of receipt. Store at -20°C as received.

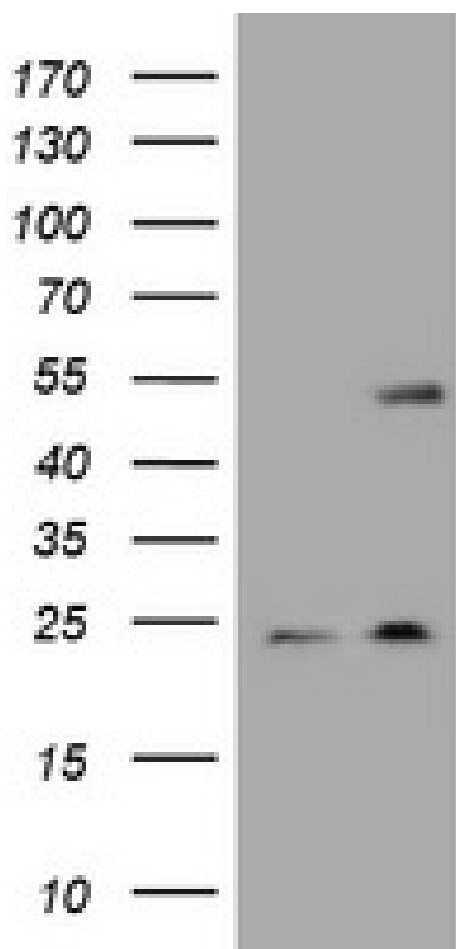
Background Information

The protein encoded by this gene is a member of the keratin family. The keratins are intermediate filament proteins responsible for the structural integrity of epithelial cells and are subdivided into cytokeratins and hair keratins. The type I cytokeratins consist of acidic proteins which are arranged in pairs of heterotypic keratin chains. This cytokeratin is a major cellular protein of mature enterocytes and goblet cells and is specifically expressed in the gastric and intestinal mucosa. The type I cytokeratin genes are clustered in a region of chromosome 17q12-q21. [provided by RefSeq, Jul 2008]

Selected Validation Data

Anti-Cytokeratin 20/KRT20 Antibody
(Clone#OTI4A2)**Catalog Number: M02828-2**

Immunohistochemical staining of paraffin-embedded Adenocarcinoma of Human colon tissue using anti-KRT20 mouse monoclonal antibody. (Heat-induced epitope retrieval by 10mM citric buffer, pH6.0, 120°C for 3min, M02828-2)



HEK293T cells were transfected with the pCMV6-ENTRY control (Left lane) or pCMV6-ENTRY KRT20 (Right lane) cDNA for 48 hrs and lysed. Equivalent amounts of cell lysates (5 ug per lane) were separated by SDS-PAGE and immunoblotted with anti-KRT20.