

Basic Information

Product Name	Anti-Calnexin/CANX Antibody (Clone#8D10B3)	
Gene Name	CANX	
Source	Mouse	
Clonality	Monoclonal	
Isotype	IgG2b	
Species Reactivity	human, mouse, rat	
Tested Application	WB, IHC, ICC/IF, FCM	
Contents	500 ug/ml antibody with PBS, 0.02% NaN3, 1 mg/ml BSA and 50% glycerol.	
Immunogen	E.coli-derived human Calnexin/CANX recombinant protein (Position: E68-R582).	
Concentration	500 ug/ml	
Purification	Immunogen affinity purified.	
Observed MW	97 kDa	
Dilution Ratios	Western blot (WB):	1:500-2000
	Immunocytochemistry/Immunofluorescence (ICC/IF):	1:50-400
	Flow Cytometry (Fixed):	1:50-200
	Immunohistochemistry (IHC):	1:50-400
	(Boiling the paraffin sections in 10mM citrate buffer, pH6.0, or PH8.0 EDTA repair liquid for 20 mins is required for the staining of formalin/paraffin sections.) Optimal working dilutions must be determined by end user.	

Storage

12 months from date of receipt, -20°C as supplied.

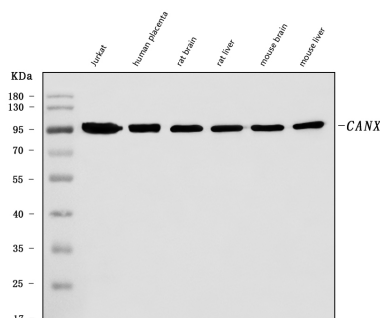
Background Information

Calnexin (CNX) is a 67 kDa integral protein of the endoplasmic reticulum. This gene encodes a member of the calnexin family of molecular chaperones. The encoded protein is a calcium-binding, endoplasmic reticulum (ER)-associated protein that interacts transiently with newly synthesized N-linked glycoproteins, facilitating protein folding and assembly. It may also play a central role in the quality control of protein folding by retaining incorrectly folded protein subunits within the ER for degradation. Alternatively spliced transcript variants encoding different isoforms have been described.

Reference

Anti-Calnexin/CANX Antibody (Clone#8D10B3)被引用在1文献中。

Selected Validation Data



Western blot analysis of Calnexin/CANX using anti-Calnexin/CANX antibody (M03372-2). The sample well of each lane was loaded with 30 ug of sample under reducing conditions.

Lane 1: Jurkat whole cell lysates,

Lane 2: human placenta tissue lysates,

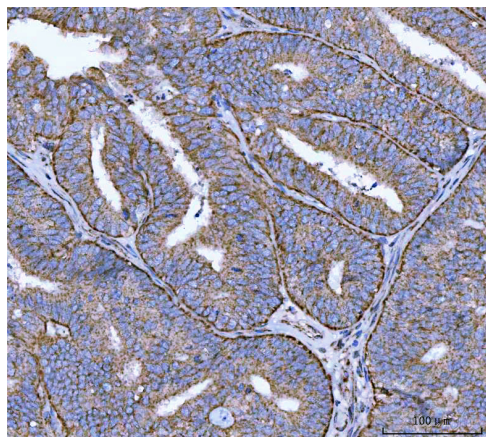
Lane 3: rat brain tissue lysates,

Lane 4: rat liver tissue lysates,

Lane 5: mouse brain tissue lysates,

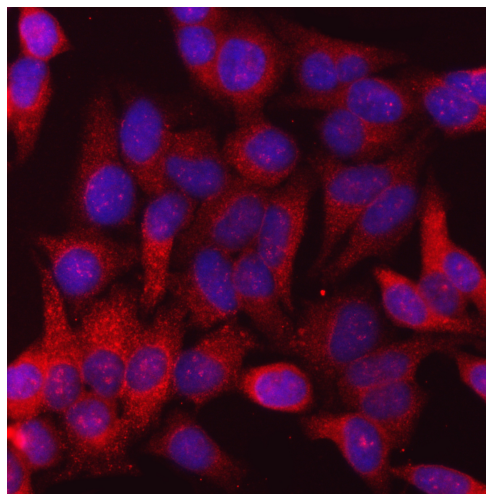
Lane 6: mouse liver tissue lysates.

After electrophoresis, proteins were transferred to a membrane. Then the membrane was incubated with mouse anti-Calnexin/CANX antigen affinity purified monoclonal antibody (M03372-2) at a dilution of 1:1000 and probed with a goat anti-mouse IgG-HRP secondary antibody (Catalog # BA1050). The signal is developed using ECL Plus Western Blotting Substrate (Catalog # AR1197). A specific band was detected for Calnexin/CANX at approximately 97 kDa. The expected band size for Calnexin/CANX is at 68 kDa.



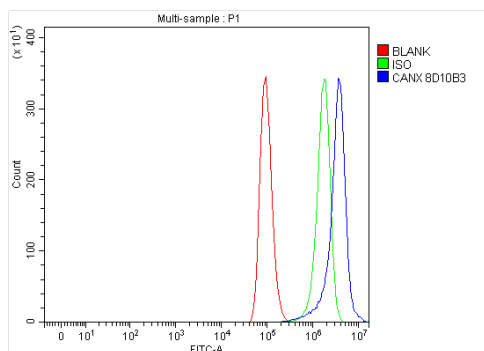
IHC analysis of Calnexin/CANX using anti-Calnexin/CANX antibody (M03372-2).

Calnexin/CANX was detected in a paraffin-embedded section of human endometrial adenocarcinoma tissue. Biotinylated goat anti-mouse IgG was used as secondary antibody. The tissue section was incubated with mouse anti-Calnexin/CANX Antibody (M03372-2) at a dilution of 1:200 and developed using Streptavidin-Biotin-Complex (SABC) (Catalog # SA1021) with DAB (Catalog # AR1027) as the chromogen.



ICC/IF analysis of Calnexin/CANX using anti-Calnexin/CANX antibody (M03372-2).

Calnexin/CANX was detected in an immunocytochemical section of Hela cells. The section was incubated with mouse anti-Calnexin/CANX Antibody (M03372-2) at a dilution of 1:100. Cy3-conjugated Anti-mouse IgG Secondary Antibody (red)(Catalog#BA1031) was used as secondary antibody. The section was counterstained with DAPI (Catalog # AR1176) (Blue).



Flow Cytometry analysis of A549 cells using anti-Calnexin/CANX antibody (M03372-2).

Overlay histogram showing A549 cells stained with M03372-2 (Blue line). To facilitate intracellular staining, cells were fixed with 4% paraformaldehyde and permeabilized with permeabilization buffer. The cells were blocked with 10% normal goat serum. And then incubated with mouse anti-Calnexin/CANX Antibody (M03372-2) at 1:100 dilution for 30 min at 20°C. Fluoro488 conjugated goat anti-mouse IgG (BA1126) was used as secondary antibody at 1:100 dilution for 30 minutes at 20°C. Isotype control antibody (Green line) was mouse IgG at 1:100 dilution used under the same conditions. Unlabelled sample without incubation with primary antibody and secondary antibody (Red line) was used as a blank control.